

Don't Let Storm Water Run Off With Your Time and Money!

What the Construction Industry Should Know About Storm Water In Our Community

The construction industry plays an important role in improving our community's quality of life by not only providing new development, but also protecting our streams and rivers through smart business practices that prevent pollution from leaving construction sites.

Storm water runoff leaving construction sites can carry pollutants such as dirt, construction debris, oil, and paint off-site and into storm drains. In our community, storm drains carry storm water runoff directly to local creeks, streams, and rivers with no treatment. Developers, contractors, and homebuilders can help to prevent storm water pollution by taking the following steps:

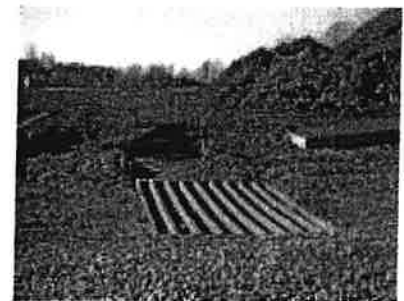
1. Comply with storm water permit requirements.
2. Practice erosion control and pollution prevention practices to keep construction sites "clean."
3. Conduct advanced planning and training to ensure proper implementation on-site.

The remainder of this fact sheet addresses these three steps.

Storm Water Permit Requirements for Construction Activity

Planning and permitting requirements exist for construction activities. These requirements are intended to minimize storm water pollutants leaving construction sites.

- Pennsylvania's Erosion and Sediment Pollution Control Program (25 Pa. Code, Chapter 102) requires Erosion and Sediment Control Plans for all earth disturbing activities.
- The National Pollutant Discharge Elimination System (NPDES) Permit Program (25 Pa. Code, Chapter 92) requires that construction activities disturbing greater than one acre submit a Notice of Intent for coverage under a general NPDES permit.



Knowing your requirements before starting a project and following them during construction can save you time and money, and demonstrate that you are a partner in improving our community's quality of life. For more information about these programs, contact your local county conservation district office or the Department of Environmental Protection.

Erosion Control Practices:

- Perimeter controls (e.g. silt fence)
- Sediment traps
- Immediate revegetation
- Phased, minimized grading
- Construction entrance
- Protection of streams and drainage ways
- Inlet protection



An Ounce of Prevention

Rain that falls onto construction sites is likely to carry away soil particles and other toxic chemicals present on construction sites (oil, grease, hazardous wastes, fuel). Storm water, if not properly managed, carries these pollutants to streams, rivers, and lakes. Erosion and sediment control practices can serve as a first line of defense,