

AROUND TOWN

Established 1859

Winter 2022



INSIDE THIS ISSUE

Borough Directory	2
Borough Hall Holiday Schedule.....	3
Keeping Stormwater out of Our Sewers.....	4
New Borough Website Coming Soon.....	4
Borough Receives Grant for Lions Playground.5	
The Emmaus Farmers' Market.....	6
Lunch Bunch.....	6
Recreation and Entertainment Commission.....	6
Emmaus Main Street Partners	7
Emmaus Public Library.....	8-9
Snow Plowing Tips and Reminders.....	10
Building Construction Update.....	11
Holiday Refuse and Recycling Schedule.....	11
Christmas Tree Collection.....	11
Emmaus Arts Commission.....	12
Grant for South 2nd Street	12
Emmaus Commemorative Garden.....	13
Emmaus Historical Society.....	14-15
Emmaus Garden Club.....	15
1803 House.....	16
The Knauss House.....	17
Shelter House.....	18
Emmaus Kiwanis Club	19
Police News	20-21
Smart911 Rave Alert System.....	21
Update on Borough Water	22-23
Sewer Lateral Inspection Program	24
Curbside Leaf Collection.....	25
Compost Site Hours.....	25
Volunteer Opportunities.....	26
Go Paperless!.....	27
Permits are Required.....	28
Moving Permits.....	28
811 Call Before You Dig.....	28
E360 Code.....	29
Post-Summer After Sun Care Tips	20
Emmaus Fire Department.....	30-31

SAYING GOODBYE TO 2022 AND WELCOMING 2023

This past year has been a year full of activity across the world, in our country, and especially in our community. We continue to witness political turmoil, both internationally and domestically. But we've also experienced many positive things in the past year. We hope that we are finally turning the corner on the COVID-19 pandemic. Most people are back to work, as most businesses have spent the entire year struggling to hire enough people. We've had several new businesses open in the community, including several exciting new restaurants, with others on the way. Although interest rates have been increasing, the housing market in Emmaus has been among the hottest markets in all of Pennsylvania for several years, as the average house is only on the market for a few weeks. Most families have returned to their old normal routines and are able to go on vacation again. It is important for all of us to remain vigilant, as COVID-19 hasn't left, but the spread of it has certainly slowed.

It has been a very busy year in the Borough as well. While we have certainly had our challenges with water, sewer, streets, we have seen great progress as well. Our building construction projects have taken off and continuing to make great progress. We added numerous amenities to our community pool this year, with the addition of a new sliding board, a zip line, basketball hoops, and a climbing wall. Revenue at our swimming pool and our concession stand were at record highs this summer, as our daily attendance to the pool exceeded our recent attendance records. We have several new department managers in the Borough this year, and they have added new energy, ideas, and direction to our operations. Our volunteers have continued to hold many successful events, as the Summer Concert Series once again expanded to Triangle Park. Our Arts Commission continues to host successful events throughout the year and continue their hydrant painting initiative. Other volunteers in our community continue to make their organizations our community's greatest assets. For example, the Knauss Homestead has never looked better, as the volunteers at the Homestead have held numerous successful events this year and have made numerous upgrades to the house and barn at the facility. Other civic organizations in our community continue to make huge impacts for our residents, volunteering time and money every day. Our volunteers pulled off a fantastic Halloween Parade. Our Farmers' Market is one of the most popular in the entire region. We are certainly proud of the people in our community. If you are not part of volunteering, but want to find a way to contribute, please feel free to reach out to us and we can help guide you in the right direction. Our residents are what makes Emmaus the envy of the Lehigh Valley!

By the time you read this article, the holidays will be upon us. Most of the leaves will be down and the crisp, cool weather will be in the air. Before we know it, Thanksgiving will be upon us, and the holiday season will be in full swing. Hopefully you'll be able to celebrate Thanksgiving Dinner this year with more of your family, as it just wasn't the same celebrating our holidays with a virtual call. There were many positives in the past three years that we may not realize. For most of us, we were able to get to spend time with our families. Rather than the hustle and bustle that we are so used to, many of us were able to actually sit down with our children, spouses, and other loved ones and spend quality time with them, rather than quickly coming home from work, eating on the fly, making sure that we get

Continued on page 2

Borough of Emmaus

28 South 4th St. • Emmaus, PA 18049

610-965-9292 • Fax: 610-965-0705

www.borough.emmaus.pa.us

Borough Contact Information

Borough Hall (Main #)	610-965-9292
Borough Manager	610-966-6357
Pavilion Rentals	610-965-0702
Public Works	610-965-9288
Refuse/Recycling	610-965-0702
Tax Collector	610-967-4598
Treasurer	610-965-5865
Water/Sewer Billing	610-965-9231
Zoning	610-967-1322
Ambulance Corps	610-967-5615
Fire Department	610-967-5630
Fire Inspector	610-965-0719
Mayor	610-965-9255
Police Non-Emergency	610-967-3113
Emergency	911

www.borough.emmaus.pa.us

Please note that Borough Hall will be closed on the following dates: Thursday, November 24, 2022,

Friday, November 25, 2022, Monday, December 26, 2022,

Monday, January 2, 2023, and Monday, February 20, 2023

Find us on 

Other Important Phone Numbers

PA One Call	1-800-242-1776
Refuse/Recycling Whitetail Disposal	610-936-9967
Street Lights Repair and Maintenance, PPL	1-800-342-5775

Continued from cover

to practice on time, get home, do homework, take a shower, and get to bed, just to do it all over tomorrow. Life has slowed down for many of us, and perhaps made us rethink our priorities. For many, we've learned that there are other ways to conduct business or to work, as we've learned how to work from home or remotely, and we've become better with technology, as we've been forced to rely on it more than ever. For others, we've become more connected with the outside world, as we've begun biking, hiking, and walking again. Yes, there are still material and goods shortages across the world, but we've figured out how to adjust and deal with it. We have had our struggles, perhaps with money or health, but if you truly think about it, many of us have changed our habits or lived a better way of life. We have witnessed the true sense of community, as we've seen an outpour of neighbors helping each other, whether it is assisting the next-door neighbor, or if it has been through charitable causes. We have seen the true meaning of community through this labor of love that our citizens have given each other. While we have had our challenges and struggles, we have so much more to be thankful for, and we are truly thankful that we are able to be spend time together face to face.

Whether you celebrate a religious holiday or just simply enjoy the holiday season, Borough Council, Mayor Gilbert, and all of the employees and volunteers of the Borough of Emmaus want to wish you a Happy and Healthy Holiday Season.

If you know anything about our wonderful community, you know that the holidays are a time for great festivals, celebrations, and events throughout the Borough. Old-Fashioned Christmas is near, and soon after we will be celebrating the new year. In early February, our Arts Commission will once again host Snow Blast. Several of our other local organizations are also working on bringing you some holiday cheer that you are so used to as well. Stay tuned to the Borough website or our Facebook Page for different events and holiday happenings throughout the community.

As we know, with winter comes winter weather, although we were spared for the most part last year. When it does arrive, we urge you to be careful. Our Public Works Department will be removing snow and ice from the streets throughout the winter. Please remember, their job is to remove that snow and ice. Please



Live life fully again.

LVHN.org/ortho | 833-LV-ORTHO

 **Lehigh Valley
Orthopedic Institute**

don't throw it back out in the street, as you are only making it dangerous for others. Please know that they try to plow curb to curb, which means that you may get plowed in again if you shovel your walk before the streets are plowed. We ask that you be respectful and understand that they are only doing their jobs. In addition, our emergency service providers respond to countless calls from people falling on the ice, accidents, heart and breathing problems, and other emergencies related to snow and ice. Please be careful and know your limitations. If you have a neighbor that is elderly, handicapped, or has limitations, we encourage you to reach out and try to help them as well, as we all live in this wonderful community together.

We truly wish you a very happy and healthy holiday season and a short, warm winter without too much snow and ice! Here's to 2023 and a fresh start to what we truly hope will be the best year of your life!

Borough Hall Holiday Schedule

Borough Offices will be closed in observance of the following holidays:

December 26, 2022 – for Christmas Day

January 2, 2023 – for New Year's Day

February 20, 2023 – for Presidents' Day

Please note that the Borough Council Meetings that would normally be scheduled for Monday, January 2, 2023, will be held on Tuesday, January 3, 2023, due to the New Year's holiday and Monday, February 20, 2023, will be held on Tuesday, February 21, 2023, due to the Presidents' Day holiday.

The Borough of Emmaus employees wish everyone a very safe and Happy Holiday Season! We look forward to serving you in 2023.



Thank You

A Special Thank You to Our Business Sponsors

The Borough of Emmaus would like to thank the businesses that supported this newsletter through their very generous advertising sponsorship and to recognize them as supporters of our community. It is because of their contributions that this newsletter has been produced at no charge to our residents. We would like to encourage our residents to patronize these establishments first when given a choice as these businesses play a substantial role in the economic vitality of our community.

E. F. Butz Agency

"For All of Your Insurance Needs"

HOME | LIFE | AUTO | COMMERCIAL

3333 W Emmaus Avenue | Emmaus | 610 965-2824 | efbutzins.com | efbutzins@rcn.com

Keeping Stormwater out of Our Sewers

The Borough is part of a larger sewer collection system that sends sewage to the Klines Island sewer plant in the City of Allentown. During dry weather, the Borough sends about 750,000 gallons of sewage per day to the sewer plant. However, on a day where we have 2 inches of rain, we send about 2 million gallons of sewage to the plant, unless the rain comes very hard and quickly. There have been times when that occurs that we have sent nearly 5 million gallons of sewer to the plant. This is unacceptable, as stormwater is infiltrating the sewer system and helping to cause illegal discharges at the sewer plant. It is our responsibility to get the stormwater out of the sewer. The trick is that our sewer was constructed between 1959 and 1962, so it's the 2nd oldest system in the entire sewer network going to the plant.

Indications are that the most significant infiltration of water into the system are in the west end of the Borough. Several years ago, the Borough purchased a flushing truck to flush the system for sewer camera inspections. The flushing truck also helps flush stormwater lines and other necessary work with our systems. The Borough recently purchased two significant pieces of equipment to help find and locate sources of infiltration. This year, the Borough purchased a new camera truck to allow our departments to properly conduct camera work in our sewer lines in search for leaks in our pipes and laterals. Moreover, the Borough has recently repaired and replaced over 100 manholes with two grants that combined for nearly \$350,000. The manhole inspection and repair work will continue, as will the inspection program. The Borough anticipates borrowing approximately \$4 million to make significant repairs to the system. The Borough will be applying for Penn Vest grants and loans for this project. It is anticipated that the Borough will use the revenue from the infrastructure surcharge in your sewer bills to pay for the loan for this project.

It is important to separate the water from the sewer system for multiple reasons. First, it is necessary to help prevent the sewer plant from illegally discharging raw sewage into the Lehigh River, causing environmental pollution to the river and its wildlife. It is our responsibility to control the water coming out of our community. PA DEP and EPA have a mandate against every municipality in the system requiring us to do this. Additionally, the City of Allentown and the Lehigh County Authority are currently conducting a study for our new Act 537 Plan to project the future needs of the sewer plant. That project could cost several hundred million dollars, especially if they are required to increase the size of the plant based on the amount of water that reaches it during a rainstorm. The Borough will be required to pay the portion towards the plant improvements, based on the percentage of surcharge we are sending out of the community above our allocation. That could be in the tens of millions of dollars if we don't do our part ahead of time. Moreover, PA DEP can issue an Order against every municipality on the sewer system preventing any type of new construction or addition to the sewer plant if we cannot decrease the amount of water going to the plant. By not doing our part, we could prevent development in other communities, and vice versa.

Therefore, the Borough has committed to conducting a significant amount of remediation work over the next several years, as we plan to continue to seal off manholes from allowing water to flow into them, as well as working to fix leaks into our sewer mains. This is also why the Borough has mandated sewer later inspections of all home sales, as we have been informed that a large portion of the water infiltration and inflow issues come from broken and cracked sewer laterals as well. While it is nearly impossible to eliminate all stormwater from the sewer, it is our goal is the reduce enough stormwater out of the sewer system to meet DEP compliance regulations. You can do your part by making sure that your floor drains do not go to the sewer, that your downspouts don't go to the sewer, and when you purchase or sell your home, that you have your sewer inspection completed. In addition, if you have trees in your yard near your home, there is a good chance the roots have infiltrated your sewer lateral. A sewer cleanout can help a contractor to address root issues and other clogs that may be affecting your sewer.



New Borough Website Coming Soon

Borough Council recently voted to contract a company to design a new Borough website. You may have noticed over the last few months some issues with our current website, as the website was hacked on numerous occasions, despite the hack continuously being removed. If you visit the Borough's website and it is completely down, we will do our very best to post as much information as possible on the Borough's Facebook Page. Our Council Meeting videos will continue to be posted on our You Tube Channel as well.

With the new website, there will be several new features that will be helpful. The site will have online forms for individuals to fill out, which will eliminate the current process of trying to locate the PDF file, printing it, and mailing it to Borough Hall. The website will also have a new calendar and a unique resident notification feature, where you can enter your email address and / or phone number and receive different updates through the notification system. The site will be hosted by a 3rd party company, who will also monitor the security of the site. The website will also have an ADA accessibility feature, where individuals with different disabilities will be able to click on different features to access the site according to their needs. It will also have a link where you can report a concern such as a pothole or other issue to the Borough right through the website. You will be able to continue to rent pavilions and pay bills online. It is estimated that the creation of the new site will take approximately 6 months to build.

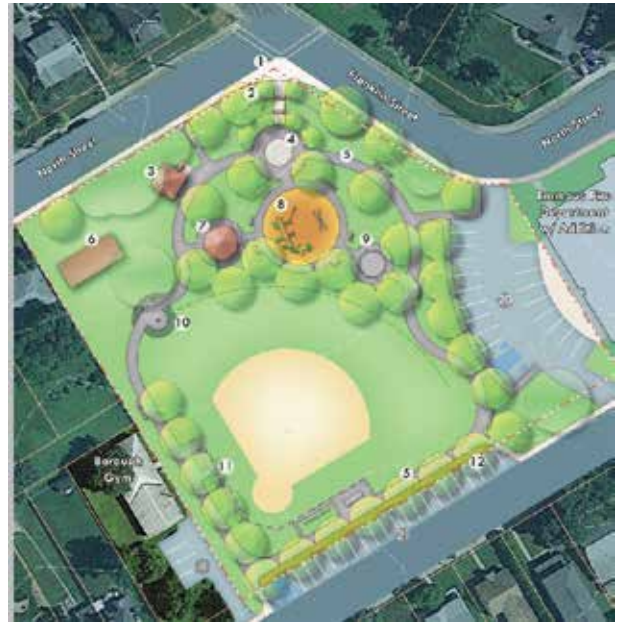


Borough Receives Grant for Lions Playground

The Borough recently received a \$318,000 park rehabilitation grant from the Pennsylvania DCNR to assist with the rehabilitation of Lions Playground. After conducting our Master Park Plan and holding numerous public meetings, Borough Council decided that improvements to Lions Playground should be targeted first. The DCNR grant will cover approximately 50% of the costs for the project. The current proposed project will include relocation of the baseball field, new playground equipment, bathrooms, a walkway, a pavilion, and landscaping. While the project doesn't include every aspect of the Master Plan, it includes many of the amenities needed to rehabilitate the park, as most of the current equipment was removed due to not meeting code requirements. We are extremely excited to conduct these much-needed improvements to this highly used park. The grant is over four years, therefore, the project will most likely be in several phases.

In addition to this, the Borough plans to conduct several other significant park improvements, which will begin in 2023. In each of the recent residential development projects, the Borough has earmarked all recreation fees to the park closest to the development. We are planning to replace the equipment at the Arch Street Park in 2023 or 2024. In addition, at Furnace Dam Park, the Borough plans to conduct several park improvements. Although plans have not been finalized, our Master Park Plan identified the need for a pickleball court as well as several other amenity additions. Additionally, we will be planning for a phase II engineering assessment on the actual Furnace Dam.

The Borough is also in the process of applying for a grant to hopefully fund the rehabilitation of Boroline Park, as that park rehabilitation was also identified as a primary focus of our studies.



Legend

- | | |
|--|---|
| --- Lions Field Park Boundary | 11 Relocated Ballfield, 60' Base Path, w/ Relocated Bleachers and New Benches |
| --- Parcel Lines | 12 Tree-Lined Parking Buffer w/ Permeable Pavement |
| 1 New Crosswalks and Expanded Sidewalk | Parking Spaces |
| 2 Tiered Seawalls and Entry Walkway | ADA Parking |
| 3 Restroom | Backstop / Fence |
| 4 Zero-Depth Splash Pad | Outfield, 150' |
| 5 Perimeter Path, 8' wide | Park Bench |
| 6 Existing Storage Building | Sports Bench |
| 7 Pavilion | Bicycle Rack |
| 8 Playground | Proposed Ornamental Tree |
| 9 Relocated Gaga Pit | Proposed Deciduous Shade Tree |
| 10 Flag Seating Area w/ Planting Bed | |

Art Schneck Optical Co.

3 GENERATIONS STRONG

PRESCRIPTION EYEWEAR

• All Services by Appointment •

610-965-4066

artschnecko.com

720 HARRISON STREET

EMMAUS, PA 18049

DKB Direct Kitchen & Bath

Strauss Family Owned Since 1982

610-262-7235

www.directkitchen.com

For the kitchen you'll love to come home to.

NKBA National Kitchen & Bath Association

5585 MacArthur Road
Whitehall, PA 18052
PA HIC #004209

David Strauss
Steven Strauss, AKBD
Apts. Recommended

COLONIAL CREST APARTMENTS

Altman MANAGEMENT GROUP

102 North 10th Street
Emmaus, Pennsylvania 18049
(p) 610.967.5134 • (f) 610.965.1156

www.altmanco.com

Dr. Dan Smith Dr. Ashley Borrelli Dr. Erin Murphy

ALBURTIS ANIMAL HOSPITAL

Full Service Medical & Surgical Care ...
... with a Small Town Atmosphere!

- For Over 20 Years - Affordable & Compassionate
- Complete Medical, Surgical, Dental Care
- Digital X-Rays, Ultrasound, Laboratory
- "Like" us on Facebook!

106 N. Main St. Alburtis, PA 18011 610-967-7387

www.AlburtisVet.com

The Emmaus Farmers' Market

REGULAR SEASON: Sundays, May-November • 10:00 am - 1:00 p.m.

Winter Market: 2nd & 4th Sundays, January-April • 10:00 a.m. - Noon



Our regular season is in full force and runs through November 27th from 10:00 a.m.-1:00 p.m. This year, our winter market kicks off unlike any other season! For this year only we are open EVERY SUNDAY in December except Christmas Day. Come shop for unique holiday gifts and don't miss the market on December 4th, 11th, and 18th from 10:00 a.m.-NOON, our regular winter hours but with a full vendor lineup. On January 8th, we will return to Winter Market on the 2nd & 4th Sunday from 10:00 a.m. - NOON which runs through April 23rd.

Visit your farmers at the Triangle on Sundays throughout the winter for your weekly produce and meats. Bundle up for the weather and enjoy food & coffee and meet up with friends. We are outdoors Rain, Snow OR Shine at the Triangle and continue to bring you local fruits & vegetables, a variety of dairy products, bread & baked goods, raw honey, coffee, herbs, locally grown organic hemp & CBD products, pasture raised meats & eggs, and more.

Winter is the time we schedule our Community Table and Live Music for the year. Did you know May 2023 marks our 20th Anniversary!? If you are interested, please email the Marketing & Events Coordinator, Jen Schuster at info@emmausmarket.com (please, no local businesses or crafters, we only accept non-profits). Be sure to follow us on Facebook & Instagram for any new updates and visit our website www.emmausmarket.com for more information and to locate the Community Table Request Form. Don't forget to stop by the market Information & Merch Tent to see our latest merch and to get your #RoosterRewards card punched to earn market bucks and free merch! Check out our interview on WDIY from July 4, 2022 if you haven't already: <https://www.wdiy.org/show/the-inside-dish/>



Come One! Come All! You're cordially invited to join the "Lunch Bunch."



The community room in Ridge Manor 1, located at 333 Ridge Street, Emmaus serves a hot nutritious meal Monday through Friday at 11:30 a.m. Please consider joining us to enjoy socializing, listening to interesting speakers, participating in fun activities, and eating a delicious and nutritious meal with other seniors. The Lehigh County Aging and Adult Services encourages you to join the "Lunch Bunch." This program is available to all those who live in the community and are 60 and over. You can choose to have a hot or a cold meal. Feel free to contact center manager, Rachel Cubellis, at 610-965-2171 for questions or to make a reservation (by 10:15 a.m. the day before). We hope to see you soon!



EMMAUS RECREATION AND ENTERTAINMENT COMMISSION

RECREATION AND ENTERTAINMENT COMMISSION - PLANNING 2023

The Recreation and Entertainment Commission would like to thank everyone who attended the summer concert series and other events last summer! A complete list of next year's events will be published in the summer newsletter.

Do you have an idea for an event you would like to see in the borough?

The Commission would love to hear from you! Please send us an email at emmausrec@gmail.com, or attend one of our monthly meetings. The meeting date/time can be found on the borough's website at <https://www.borough.emmaus.pa.us/>

Would you like to volunteer and help plan our events?

The Recreation and Entertainment Commission is in need of more volunteers to assist us in making these events happen. Visit our website at <https://www.emmausent.com>, for more information on how to become a member, or contact us at emmausrec@gmail.com.

Sponsorships:

If you or someone you know would like to support us to continue to provide free community events, please email us at emmausrec@gmail.com. **All donations are tax deductible.**

Warm Holiday Wishes from Emmaus Main Street Partners

191 Main St. | Suite 101 | Emmaus, PA 18049

Proud Partner of The Greater Lehigh Valley Chamber of Commerce

OFFICES IN ALLENTOWN, BETHLEHEM, EASTON, EMMAUS,
LEHIGHTON, NAZARETH AND PHILLIPSBURG



The Emmaus Main Street Partners continue to celebrate new businesses and milestones of our local businesses. In the past few months, we've celebrated Capo & Co, Mid-Atlantic Technology Professionals, Nowhere Coffee Co, The Seltzer Group, Zim Zum Consulting, and more!

Saturday November 26th is Small Business Saturday! Set aside the whole day to kick off your holiday shopping season. Plan to shop at, peruse, support, and encourage the local businesses in the Borough. Everyone is invited to support this nationwide initiative to SHOP LOCAL! From the strip malls on Chestnut Street to the smaller shops off the main drag to our iconic Triangle businesses, our community is filled with hardworking individuals who are chasing a dream. Please consider shopping at their small businesses and help their dreams become reality.

On Small Business Saturday, November 26th, the EMSP are going to launch a Bingo card with a list of tasks to accomplish. Once you get five in a row, horizontally, vertically, or diagonally, turn in to our staff (email ErinD@LehighValleyChamber.org) for a prize. First 50 Bingo winners will get a prize!

Once again, we'll have a photo opportunity on the Triangle. Stop by anytime on Saturday to snap a pic with our new sign created by Vinyl Press Signs & Graphics then post on your social media to show your support of local, small businesses and that Emmaus is the place to be!

Like always, we'll be giving out branded tote bags to the first 100 community members to use as a shopping bag for all your travels that day. Please look at Emmaus Main Street Partners Facebook page for more details on the time and location on Saturday November 26th.

We will also be continuing the Holly Jolly Shopping Spree where each receipt from an Emmaus business counts as a raffle entry for a variety of prizes. This initiative starts on Small Business Saturday so save your receipts and check out the Emmaus Main Street Partners Facebook page on where to text them to! The Holly Jolly Shopping Spree will run through Wednesday December 21st at 12:00 p.m. when we will pull names from the pool for a bunch of smaller prizes so we can celebrate our local shoppers!

Old-Fashioned Christmas will be held on Saturday December 3rd and as always, it's set to be a day full of fun! We'll be hosting our annual Cheers Trail, a drinking trail around local businesses and organizations. For the kids during the day, our historic sites will be hosting the Candy Cane Lane Trail where families can go to the various sites and make crafts! From 4:00 -7:00 p.m. on the Triangle, there will be kids' activities from local nonprofits, pictures with Santa, reindeer, and more!

Partnering with the East Penn Chamber, we'll be hosting an Ugly Sweater Party to help raise funds for the Francee Fuller Memorial Scholarship Fund given out annually to seniors at the East Penn School District.

Find more information on the Emmaus Main Street Partner's Facebook page <https://www.facebook.com/EmmausMSP>, Chamber's event calendar at www.lehighvalleychamber.org/events, call Ashley at (610) 739-1273, or email AshleyL@LehighValleyChamber.org.





Belong at the Emmaus Public Library!

Emmaus Public Library - 11 E. Main Street, Emmaus, PA 18049

www.emmauspl.org 610-965-9284

Hours Monday -Thursday, 10:00 a.m. to 8:00 p.m., Friday & Saturday, 10:00 a.m. to 5:00 p.m.

Winter 2022

All Events are FREE and open to the public.



Annual Holiday Book Sale by Friends of the Library on Friday, December 2nd from 6:00 p.m. to 8:00 p.m.

New Service:

Notary Public Service** - Most Thursdays, 4:00 - 6:00 p.m. The library is now offering notary services, free of charge, by appointment only for the residents of Emmaus Borough, Macungie Borough, or Upper Milford Township. Please call the library at 610-965-9284 to make an appointment, indicating the type of notarization requested.

Monthly Adult Events:

Libby Lessons** - RSVP to Lauri for help with Libby by OverDrive for eBooks and other digital collections. Remember to bring your charged device and your library card to your 30-minute appointment. Days & times vary.

Winter Book Bingo - Adults, pick up a Bingo sheet from the library or print from home! Read books that fit the squares, then cross off the rows across, down, and diagonal. Once you are a winner, turn in your sheet to the library in person or via email to eplcollection@cliu.org and receive a small prize!

Daytime Book Group** - 1st Tuesday of the month at 2 p.m. There are some copies available to borrow at the front desk.

December 6th - *From Scratch: A Memoir of Love, Sicily, and Finding Home* by Tembi Locke

January 3rd - *In the Midst of Winter* by Isabel Allende

February 7th - *Destiny of the Republic* by Candice Millard

Pinterest Party - 1st Mondays of the month at 6:00 p.m. All supplies for first 30 people will be provided. First come, first served.

December: Repurpose old books with us to make gorgeous holiday art.

January: Light up your life by making some cookie cutter candles with us.

Crochet Club - Wednesdays at 6:00 p.m. Drop in for our weekly crocheting club! All skill levels are encouraged to join in. Bring your current crochet project or get started with advice from more experienced crocheters.

Representative Wild's Mobile Office - 2nd Thursday of the month from 2:00 - 5:00 p.m. Drop in to meet with a representative from Susan Wild's office for in-person constituent services.

Alzheimer's Caregiver Support Group** - 2nd Tuesdays of the month at 10:30 a.m. Presented by Alzheimer's Association Delaware Valley Chapter and hosted by Devon House Senior Living, and facilitated by Laura Crossan, CDP. Register at 610-967-1100 or email lcrossan@devonhouseseniorliving.com. Visit www.alz.org/delval to learn more about caregiver programs and resources.

Creative Writing Group** - 3rd Wednesday of the month at 1:00 p.m. Join us for an in-person creative writing group with Pat Johnson, a long-time creative writer. The group welcomes those who want to write creatively for fun and/or publication. All are welcome.

Find Your Ancestors** - 3rd Wednesday of the month at 5:00 p.m. Sign up in advance for a 30-minute appointment with Chris to get in-person assistance uncovering your family tree and insight using Ancestry.com.

Memoir Writing Group** - 4th Tuesday of the month at 1:00 p.m. Join author Jerry Waxler and others on a ZOOM videoconference to write about your life.

Coloring Club - 4th Monday of the month at 6:30 p.m. Explore your creative side, reduce stress, and color at the library! We will provide coloring sheets, markers, and pencils or you can bring your own. Everyone is welcome.

Special Adult Events:

Join us for free in-person computer workshops that include a PowerPoint, learner handout, activity sheet, and certificate of completion. Bring your charged device with you if you have one. These **Digital Literacy Workshops** are brought to you through a grant provided by AT&T and PLA. Looking for more self-paced learning? Check out digitallearn.org. Every other Monday at 11:00 a.m.

November 21st - Cybersecurity Basics

December 5th - Email Basics

December 19th - Computer Basics

January 9th - Video Conferencing Basics

January 23rd - Tablet iOS Basics

Wrap it Up! Saturday, December 10th at 1:00 p.m. You bring a handful of small to medium-sized presents that need to be wrapped. We provide a ready supply of wrapping paper, tape, bows, and wrapping expertise. Drop in to wrap...



Monthly Family, Kid & Teen Events:

Storytime! October through December, weekly on Wednesdays at 10:30 a.m. Toddlers and preschoolers are invited to join us with their adults for stories, singing, crafts, and fun!

Facebook Writing Prompts - 1st Thursday of the month at 7:00 p.m. Join us on Facebook for a new prompt every 15 minutes – write about each one or save them for later, share your work or keep it private. The choices are yours in this all ages event.

Block Party - 1st Saturday of the month at 11:00 a.m. from October through December. For all little builders of preschool and elementary ages and their caretakers. Miss Sue will open the block cabinet in the children's wing, and we will make amazing things together.

Teen Writers Group** - 2nd Thursday of the month at 6:00 p.m. Join Miss Sue to write from new prompts and talk about the process of writing – reading aloud not required!

Teen Anime - 3rd Tuesday of the month at 6:00 p.m. Anime films and OAVs for discerning teens!

Books 'n' Barks - 4th Thursday of the month at 6:30 p.m. Books 'n' Barks is back! Read to the Lehigh Valley Therapy Dogs. Bring your own books or choose one from the library. There is no registration needed.

Special Family, Kid & Teen Events:

Wolfenoot – Wednesday, November 23rd. Stop by the library to celebrate our pack, anyone who has a dog, or has ever been kind to a dog. Activities for all ages.

Parent-Child Workshop Series - Every Tuesday from January 31st - February 28th from 10:30 a.m. to 12:00 p.m. Family Place Library-for children 1-3 years and their parents/caregivers. No kids 6 years and over. Preregistration preferred. Held twice a year. Limit of 15 families. Each week has informal playtime and a different community expert. Please call 610-965-9284 or stop by the library to register.

***Please send Adult Event RSVPs to Lauri by email to eplcollection@cliu.org or call 610-965- 9284 x210, and send Kids & Teens Event RSVPs to Miss Sue by email to eplkids@cliu.org.*

Fun Events!



Snow Plowing Tips and Reminders



The Public Works Department of the Borough of Emmaus is dedicated to the safety of its residents. At times, snow removal can be a monumental task and our Department of Public Works employees work around the clock to keep the State and Borough routes open. In an effort to prepare our residents for impending snowstorms, the Public Works Department wants you to know more about snow removal and answer your most frequently asked questions.

1. **When will my street be plowed?** Depending on the severity of the snowstorm, roads that will be plowed first are: the roads with the highest traffic volume, steep hills, state roads, snow emergency routes, roads near emergency service facilities, and roads near public institutions. While the storm is occurring, one pass is made in each direction of every street. After this is complete, or it is determined that the storm is coming to an end, the pushing back phase of the excess snow will begin. This is when all streets are cleaned curb-to-curb or to the shoulder of the road.
2. **Should we move our cars from the street?** When a storm is forecasted, move vehicles to off-street parking when possible and keep vehicles off the street until plowing is completed. Parked cars can cause both a hazard and hindrance to snow removal efforts. This allows plows to clear the entire roadway the first time through, making return trips unnecessary.
3. **What about driveways and sidewalks?** When cleaning your street, the crews have no place to push the snow except to the side of the road. This creates the unavoidable problem of already cleaned sidewalks and driveways to be covered with snow. Residents and business owners should wait until the Borough trucks and equipment have completed their work before cleaning driveways, sidewalks, and vehicles. Snow from vehicles and sidewalks should not be deposited back into that portion of the street where snow has already been removed. Do not shovel snow from your driveways into the roadway. This practice is illegal under the state motor vehicle code and Borough Ordinance 303 and is also hazardous. Fines for violations range from \$25.00 to \$100.00. **Please do not shovel snow into the street!** Residents are responsible for the actions of anyone they may hire for removal.
4. **If the Borough pushes snow back onto my sidewalk, who is responsible?** Sidewalks are the responsibility of the property owner. Borough Ordinance 302 requires that all sidewalks must be cleared of snow or ice accumulations within twenty-four (24) hours after each precipitation ends. Failure to do so may result in fines for violations of the Ordinance. School bus stops must also be kept clear of snow and ice on the sidewalks.
5. **What if my mailbox becomes covered with snow?** Your mailbox and the access to it, for the U.S. Postal Service, is the responsibility of the resident. Again, because the crews have no place to put the snow, roadside mailboxes may become blocked. Heavy snow may damage mailboxes. This is not intentional but may occur. Please make sure your mailbox is sturdy and in good repair. The Borough will not be responsible for repairs to mailboxes placed within the legally defined rights-of-ways of its roads unless they are actually struck by the snow removal equipment.
6. **What should I do if my lawn or landscaping was damaged by the snowplow?** Any objects that are placed within the right-of-way by the property owner, including trees, shrubs or lawns are not the responsibility of the Borough in the case of plow damage. If there are low hanging branches overhanging the roadway, the Borough's plows or emergency vehicles will not be able to make a clear pass through. Those areas may not be plowed, and emergency vehicles may not have access. Please make sure that all overhanging branches are trimmed prior to winter.

Weather and snowstorms require patience. Neighborhoods and businesses should work together. If practical, develop plans ahead of time in relation to where snow and ice will be stored. Contractors with plow equipment and residents with snow blowers should remain mindful of the direction snow and ice is removed from properties. Remember, we are all trying to achieve the same goal of keeping our roadways safe and traffic moving. During snowstorms, SAFETY is the Borough's main concern.

PLEASE HAVE PATIENCE! Snow removal is tedious and a very time-consuming job. The Borough of Emmaus Public Works snow removal operators are human and work many hours under very difficult conditions to keep Borough residents safe. Please do not abuse them or threaten them or the Borough of Emmaus Police Department may be contacted. Travel should be limited during a snowfall and immediately after, unless absolutely necessary. Please do not call unless it is urgent! When crews are removed from normal routes, it slows down the overall efforts. If a call warrants attention, the information will be dispatched, and the crew will take care of the problem as soon as possible.



Adopt A Fire Hydrant

Do you live near a fire hydrant? If yes, would you like to consider adopting it this winter?

If you have a hydrant in your neighborhood, please adopt it this winter by keeping it clear of snow and ice so that it is readily accessible in an emergency.

Your assistance is greatly appreciated.

Building Construction Update

The Borough construction project on our municipal buildings continues. Most recently, the additions to both Central Station (Ambulance and Fire) and Borough Hall have been framed and the roofs have been completed. Plumbing and wiring has been replaced and all asbestos has been removed from the buildings. Some minor improvement work in the Police station is slated to begin in December. Some of the necessary work in Borough Hall includes replacing the heating system, as it was no longer functional, as well as plumbing, as there were significant plumbing issues. All electric was replaced, as a large portion of the building was still knob and tube with fuses. The asbestos flooring and plumbing were remediated as well. The building also received a fire suppression system and ADA improvements are also scheduled. At Central Station, a significant addition is being added to the rear of the building. The addition is needed, as the building was originally designed for a small volunteer ambulance department and volunteer fire. The building has not been in compliance with HIPAA requirements or medical storage requirements for many years. In addition, it has not had adequate space for a 24/7/365 emergency operation for many years. The new improvements to the building add requirements such as a fire suppression system, exhaust removal system, HVAC improvements, separated quarters for staff, security improvements, and office space. It also adds an improved training room for community and staff training. As of the writing of this article, Central Station is slated to be completed by the end of May and Borough Hall is slated to be completed by the end of July.



Holiday Refuse and Recycling Schedule 2022

Only affected routes listed, all others remain the regular pickup day
Please place materials curbside the night prior to your pick-up day to guarantee collection.

Thanksgiving Day – November 24th:

Whitetail Disposal will be closed Thanksgiving. Thursday and Friday service days will be delayed by one day. Normal Thursday service will occur on Friday, and normal Friday service will occur on Saturday. *** Wednesday service day will remain unaffected.**

Christmas Day – December 25th:

NO DELAY, Whitetail Disposal will be operating on a REGULAR SCHEDULE.

New Year's Day 2023 – Sunday, January 1st:

NO DELAY, Whitetail Disposal will be operating on a REGULAR SCHEDULE.

Christmas Tree Collection

The Public Works Department will collect Christmas trees curbside on **Friday, January 6th, 2023** through **Friday, January 13th, 2023**. Please place your natural tree at the curb, **WITHOUT A BAG, ORNAMENTS, TINSEL/GARLAND, LIGHTS, or TREE STANDS.** The Public Works Department will not collect artificial trees placed at the curb. The Borough's refuse collection company, Whitetail Disposal, will not collect trees left at the curb. Trees discarded after **January 13th, 2023** will not be picked up. After January 13th, residents must take their tree to the Compost Site for disposal. The Compost Site will be open daily January 16th to 20th, 2023, from 7:30 a.m. to 2:30 p.m. for disposal of Christmas trees and other yard waste (no loading).



Prestige
MARBLE & GRANITE INC.

RESIDENTIAL – COMMERCIAL
CUSTOM COUNTERTOPS
HARDSCAPE PRODUCTS – TILE

M, T, W, F 9-5 THURS. 9-7 SAT. 9-4
133 STATE AVE. 610-965-6900
EMMAUS, PA 18049 FAX: 610-967-0656

WWW.PRESTIGEMARBLEGRANITEINC.COM



Ott
CONSULTING INC.

CIVIL ENGINEERS • SURVEYORS • LANDSCAPE ARCHITECTS
BANGOR, PA EMMAUS, PA

P: 610-928-4690
www.otteng.com



The Emmaus Arts Commission

Fall is here and winter is just around the corner! It's such a wonderful time to let go and get creative! Vibrant colors surround us and provide plentiful opportunities for expression! Try new ways of getting creative through movement, music, visual and performing arts!



Emmaus Arts Commission announces the 16th Annual SnowBlast Winter Arts Festival!

SnowBlast Winter Arts Festival will be held on Saturday February 4th, 2023 in Emmaus Triangle Park from 12:00-4:00p.m. It's the perfect reason to get out and about during the most wonderful time of the year!

The event will feature live music throughout the day, ice carving demonstrations, food trucks, local breweries, artists, and vendors. Join the EAC at the community art project this year and get creative!

For more information and artist/vendor applications please visit emmausarts.org.

The Emmaus Arts Commission was created by the Emmaus Borough Council to encourage civic participation in the arts through the promotion of the arts within our community. Find out more information on upcoming events and what's happening with the EAC by liking us on Facebook and by visiting emmausarts.org. If you are interested in supporting the Emmaus Arts please send donations to: Emmaus Arts Commission, c/o Emmaus Borough 28 S. 4th St, Emmaus PA 18049

Share your creativity! We would love to see how you have been staying creative, be sure to use #emmausartiseverywhere on your social media posts. Please like Emmaus Arts on Facebook and follow on Instagram @emmausarts



Borough Receives Significant Grant for South 2nd Street

The Borough recently received a \$575,000 Penn Dot Multimodal Grant to help fund the rehabilitation of S. 2nd Street. The project will occur in the Spring and Summer 2023. The project will be ½ mile in length, ranging from the intersection at Main Street south to the Borough line at the base of South Mountain. The project will include handicap curb replacement, the creation of a walkway area under the railroad bridge, and S. 2nd Street road reconstruction. The project cost is estimated to be \$850,000.

In addition to this, it's no secret to anyone that street improvements must be a focus of the Borough. With the recent UGI gas work, the Borough has worked with UGI to pave most of the roads that they worked on from curb to curb, rather than just paving the strip of road where they cut. In 2022, the Borough conducted an entire street assessment to help prioritize different types of upcoming road projects. The Public Works Director has begun formulating a proposed plan to Borough Council based on this assessment to try to methodically address our streets. It is important to maintain streets before they reach the need to be completely reconstructed, therefore, the proposed project list includes both paving projects as well as other maintenance projects. The amount of work is always contingent on funding availability. As seen above, ½ mile of street costs \$850,000 to reconstruct, therefore it is important that we prioritize projects, but also be proactive in maintaining streets before they need to be reconstructed. The goal of the assessment was to assist the department in creating a feasible plan to present to Borough Council for getting back on track with improving our streets.

The Emmaus Commemorative Garden Remembers



The holiday season is just around the corner!

If you are looking for a creative gift for a special someone, the Emmaus Remembrance Garden is selling engraved bricks to be placed at the lovely Remembrance Garden next to the Knauss Homestead. There are many options to choose from - wedding, anniversary, birthday, retirement, Eagle Scout, veteran's service, community heroes, graduation - the possibilities are endless for brick-giving!

We invite everyone to visit the Garden to see the changes throughout the seasons. The perennial garden, pergola, and benches, make for a quiet and beautiful setting to sit and enjoy each season. By purchasing a brick, your gift not only commemorates the one you love or an event to celebrate, but your donation is also put to great use and is sown back into the Garden to make it even nicer for our community.

A special Remembrance Garden Brick Gift Certificate is available for bricks purchased as gifts and the ordered bricks will be delivered as soon as we have them from the engraver.

There are almost 900 engraved bricks in the Remembrance Garden including over 360 for veterans...make sure that you remember the special people and events in your life and purchase an engraved brick today!

If you enjoy gardening and natural settings, explore volunteer opportunities for individuals, corporate, and community groups at the Remembrance Garden! There are a variety of ways that you can become involved.

Visit the Garden and our website at www.emmausremembers.org where bricks can be designed and purchased with a credit card. For more information about the Garden, presentations that can be done for local groups, or volunteer opportunities, contact Mike Waddell at 484-274-2089 or remgarden1@gmail.com.



KLECKNER & SONS
The Leader
APPLIANCES & ELECTRONICS
FOUNDED IN 1945
"SERVICE IS OUR MOST IMPORTANT PRODUCT"

**Great Savings
Winter Specials!
Stop In!**

**Large Selection of QUALITY
Home Appliances at LOW PRICES**

No Interest Financing Available • Timely Professional Delivery & Installation

575 Chestnut St., Emmaus, PA • 610-965-9851 • klecknerandsons.com

FUSED
ELECTRIC LLC

484.510.0812

Locally owned
and operated

• **Residential Electric** •
FusedElectricLLC.com

SCF
ARCHITECTURE

**Architectural Design / Planning / Interiors
Code Review / Project Management / 3-D Renderings**

Emmaus ~ Pennsylvania ~ TEL: 610-297-0140
Please visit our website at www.scf-arch.com

EMMAUS HISTORICAL SOCIETY

218 Main Street, Emmaus, PA 18049

610-966-6591 • www.emmaushistoricalsociety.org • emmaushist@ptd.net

Hours: 10:00 a.m. to 4:00 p.m. every Saturday as well as extended hours during special events.



The last few months have been quite busy as the Emmaus Historical Society has begun to return to most of its programs and activities of pre-Covid times. On September 14th, the Historical Society held a program at Luther Crest in Allentown, on the Early History of Emmaus. The program was met with a very enthusiastic group with a lot of interest in learning the history of Emmaus. This program

is part of the Historical Society's community outreach programs to share with those who may not be able to travel to the monthly programs held in Emmaus.

On September 17th, the Museum and grounds of the Emmaus Historical Society were bustling with activity, visitors, music, food, and the company of other members of the Emmaus Heritage Alliance. The annual festival was opened on the front porch by the town crier, Richard Chartrand, followed with a performance by the Emmaus Moravian Brass Choir. Woodside Avenue and Emmaus Public Music Society also brought joy to attendees as they strolled through the festival. There were colonial games, a cakewalk, a Lund Forge Blacksmith, quilting, basket weaving, candle making, and spinning wheel demonstrations for all to enjoy. The Wildlands Conservancy came with a few of their reptiles for folks to see and hold as well. Be sure to mark this on your calendar for next year!

Join the Society on December 3rd from 10:00 a.m. to 8:00 p.m. for Old-Fashioned Christmas. Please come visit the beautifully decorated Museum, train putz, and special holiday displays. On December 10th, from 11:00 a.m. to 2:00 p.m., Santa and Mrs. Claus will be making a special visit to the Museum. Bring your children and grandchildren to visit and each child will receive an orange and a box of chocolates! Everyone is invited to the Museum's December 14th special event, the Christmas Covered Dish Party. Come and gather for an evening of cheer, friendship, and holiday performance. The event takes place at St. John's Lutheran Church, 501 Chestnut Street at 5:30 p.m. The Emmaus Historical Society hopes to see you during the holidays. On



The
Emmaus Historical Society
Welcomes ...

Santa & Mrs. Claus

Saturday, December 10
11:00 am to 2:00 pm

Remember when the children of Emmaus/Emmaus would go to Town Hall or Fire Co. No.1 for an orange and box of chocolates? Join us as we replicate this tradition when Santa and Mrs. Claus are in the museum from 11:00 am to 2:00 pm on Saturday, December 10th. Bring your children and grandchildren to experience this Christmas memory from yesteryear.

Please bring a new scarf, hat or gloves to donate for our "help those in need" holiday project!

218 Main Street, Emmaus, PA
www.emmaushistoricalsociety.org

Ho, Ho, Ho!

Emmaus Historical Society

CELEBRATES

Old Fashioned Christmas

Saturday, December 3
10am to 8pm

- Train Putz & Special Holiday Displays
- Beautifully Decorated Museum
- Candy Cane Lane from 12 pm - 4 pm
- **Holiday Cheers Trail & Bonus Bites**

** This is a ticketed event through Emmaus Main Street Partners to be held from 12-5pm. Must be 21 years of age to participate. (<https://www.facebook.com/EmmausMSP>)

218 MAIN STREET, EMMAUS, PA 18049
WWW.EMMAUSHISTORICALSOCIETY.ORG

Join Us For
The Emmaus Historical Society

Christmas Covered Dish Party!
December 14, 2022
5:30PM

Members and Non-members Welcome
 St. John's Lutheran Church
 501 Chestnut Street, Emmaus, PA

Let's gather for an evening of cheer, friendship and special holiday performance. Please call the museum if you plan to attend and tell us if you will bring an appetizer, side dish or dessert. We'll supply the main dish. Appetizers will be available as soon as you arrive for snacking and visiting before dinner.

Please bring a new scarf, hat or gloves to donate for our "help those in need" holiday project!

Put on Your Favorite Christmas Sweater and
let's Eat, Drink, And Be Merry!

Visit our Museum at 218 Main Street
 Museum Hours: Saturdays • 10am to 4:00pm
www.emmaushistoricalsociety.org
 610-966-6561



your visit, please consider bringing a new scarf, hat, or gloves to donate for our "help those in need" holiday project.

As a reminder, the Historical Society continues to celebrate our local centenarians. Mayor Lee Ann Gilbert was recently on hand with a Proclamation honoring Bert Winzer for his lifetime of service. If you know someone 100+ years old who lives in Emmaus or has an Emmaus connection and would like the Emmaus Historical Society and the Borough of Emmaus to recognize them, please contact us at emmaushist@ptd.net.



Fall and winter are beautiful times of the year to walk around the Emmaus historic sites and the Remembrance Garden. The exteriors of the properties are striking against the autumn leaves and snow. Please continue to follow the Emmaus Historical Society on Facebook, Instagram, and its website for all the latest updates on events and the Museum.

The Emmaus Garden Club – Over the Backyard Fence

The Emmaus Garden Club's final project for the year will be creating foliage arrangements for the 1803 House. Members will gather in early December to decorate the 16 windowsills and 8 pieces of furniture throughout the house with natural plant materials that were available in 1803. The Garden Club's finished project will be on display Saturday, December 3rd during Emmaus' Old Fashioned Christmas celebration. Arrangements will be offered for sale at \$20.00 each. Sales help support the Garden Club's scholarship fund. Following the Old-Fashioned Christmas celebration, the displays will be moved to the Emmaus Public Library where they will remain until the end of the year.

In the past, the Garden Club has encouraged the community to fill outdoor planters and/or window boxes with fresh green for some beautiful color. What if you can't do this? Bring the greenery inside! All that is needed is a watertight container, a block of Oasis (available where floral supplies are sold), and greenery. Cut the oasis to fill the container and soak it in water overnight to saturate it completely. Next, cut the branches or stems of the greenery at an angle. This will make it easier to push them into the foam. Keep the water level above the Oasis to keep the greens fresh.

To get more arrangement ideas, visit the 1803 House during its Old-Fashioned Christmas celebration and be inspired! After that, make yourself some tea and settle in to peruse your latest garden catalogues and dream of your 2023 garden! Green thumbs to all!





"The Hot Dog King"
Yocco's
 THE SECRET'S in
 Yocco's SAUCE
100th Anniversary
 1922-2022

A Local Tradition Since 1922!
Yocos.com for Menu and Locations

Bachman
Kulik & Reinsmith
 Funeral Homes, P.C.

"Family Owned & Operated-Serving All Faiths Since 1864"

John R. Kulik
 President and Supervisor
 17th & Hamilton Sts. • Allentown
610-432-4128

Christina L. (Kulik) Schantzenbach
 Supervisor
 225 Elm Street • Emmaus
610-965-2532
www.BKRFH.com

Christmas is “Old Fashioned “at the 1803 House

55 South Keystone Avenue, Emmaus PA, near the Seven Generations Charter School

Mailing Address: P.O. Box 7, Emmaus PA 18049

E-mail: Friends@1803House.org • Website: www.1803House.org • Phone: 610-965-0152

The Friends of the 1803 House invite you to visit the house on Saturday, December 3, 2022, from 10:00 a.m. to 3:00 p.m., to celebrate Old-Fashioned Christmas. The house will be warm and cozy with a fire in the kitchen's open- hearth fireplace. It will be decorated with a Christmas tree in the parlor adorned with historic colonial ornaments. There will be beautiful seasonal bouquets designed by the Emmaus Garden Club for the wide windowsills, holiday carols sung by the Macungie Minstrelaires, decorated and undecorated Douglas fir wreaths for sale, ornament crafting for the children, a “Very Merry” wine pull, 1803 holiday merchandise including the 1803 House crock (\$40), and a putz of model buildings (constructed by Andre Fatula). Learn about the colonial customs of decorating a holiday wreath or take a tour of the house and learn about our “village” small. Stop in and enjoy the holiday spirit



at the 1803 House but be sure to plan a visit to our neighbors at, The Knauss Homestead and the Shelter House, historical homes which are owned by the Borough.

History is built at the 1803 House and each new year brings more excitement about what we have learned and what we will continue to learn about colonial life. There is so much to look forward to in 2023 as we continue to bring history to life at the House. In 2023, we will glaze deteriorating window sash, finish the opening lintel project, renovate the kitchen/ entry porch, widen the kitchen/ entry south doorway, develop level presentation areas for outdoor functions, reconstruct the “buck” fence damaged by the flood of 2019, add security surveillance, properly stage each room with our antiques, and advance the education of the community. To make all of this happen, we will need financial help. We hope you will consider becoming a friend of the 1803 House in 2023. We thank all of our members for volunteering at events, cleaning the house and historic property, visiting the house, donating time, talent, and money, and sponsoring special 1803 House events and projects. 223 years have passed since Jacob Ehrenhardt, Jr. constructed his homestead, and we are proud of our “village” small.



Making a house your home since 1991

(610) 965-7837

www.rlharrisconstruction.com

Emmaus, PA

Renovation • Remodeling • New Construction

Certified Green Builder • Fully Insured

See Us on Facebook

Pennsylvania Registered Contractor – (# PA 007915)



The Therapy You Trust

We offer the following services:

- Physical Therapy
- Speech Therapy
- Occupational Therapy
- Neurological Therapy
- Big and Loud
- Orthopedic and Spine
- Sports Rehab
- Oncology Therapy
- Lymphedema Therapy
- Women's Health
- Men's Health
- Fall Prevention
- Vestibular Therapy
- TMJD Therapy



518 Chestnut St.

EMMAUS

484-822-5350

THE KNAUSS HOUSE

152 E. Main St. (rear), Emmaus, PA 18049 • www.knaushomestead.org

Knauss Homestead Preservation Society

As we approach the coming winter season, the Knauss Homestead is proud to announce that a lot has happened in the past few months, and more is yet to come.

Restoration is always an ongoing project. The kuche (kitchen) fireplace in the house is being restored and activated by Jamison Home Services. This project not only involves the relining of the chimney but removal of wooden supports and replacement of the chimney damper. All of this will enable us to have complete use of the fully restored fireplace.

The barn had all the asbestos shingles removed and the original siding exposed. Prestige Buildings, a premier barn restoration company is taking on the task of restoring the barn. This will involve making the barn weather tight and the foundation repaired and re-pointed. The exposed siding revealed the existence of a larger barn door on the bank side of the barn that had been replaced by a smaller door. This larger door is being built and will replace the existing door. Windows have been rebuilt, restored, painted, and installed.

Interior restoration is also taking place. A Blue Stone terrace has been constructed in the barn yard to the rear of the barn. This work is being completed by Cerminaro Stone Supply of Bucks County and will compliment similar improvements to the lower portion of the barn. One may have the tendency to ask why all of this is being done. The answer is that the Knauss Homestead plans on transforming the barn into an "Event Venue" for wedding receptions and other appropriate events all while maintaining the "Historic integrity" of the upper portion of the barn. Preservation of our history is foremost and paramount to the Knauss Homestead Preservation Society and all the changes

will transform the Homestead to one of the premier destinations in Emmaus and perhaps the Lehigh Valley.

One of the many long-range goals is to transform the "Homestead" into an Early Colonial education center designed to teach all who are interested about the life, trials, and tribulations of our early settlers.

In addition, Cerminaro Stone Supply has rebuilt both the front and back entrance steps to the "Homestead" with stone to make them not only safer but more aesthetically pleasing.

The Knauss Homestead had a very successful first annual Peach Festival and Harvest Festival held on the grounds with more the 50 vendors, food trucks and more. We look forward to hosting many more events.

Please continue to follow us on our website for important information about our progress and upcoming events. www.knaushomestead.org. Like us on Facebook.



H. Walker Schantz, III, FD
250 Main Street
Emmaus, PA 18049

610-965-2421
fax. 610-967-4346
schantzfh@hotmail.com
www.schantzfh.com

HE KNOWS IF YOU'VE BEEN DIRTY!

Janitorial Contract Services

- Daily and weekly cleaning services tailored to your specific janitorial goals.
- Hard-surface floor and carpet maintenance programs
- Dusting, window washing, waste removal and restroom cleaning
- Monthly fixed costs
- Guaranteed Service Coverage AND MORE...

Call today for your free estimate!

ServiceMASTER Clean



Let us worry about the hiring for your cleaning needs!

ServiceMaster of Allentown
Chestnut St | Emmaus | 610.965.6058

Shelter House Society's Soft Opening

601 South 4th Street, Emmaus, PA

<https://shelterhouseemmaus.org/>

On Sunday, October 2nd from 4:00 to 6:00 p.m., the Shelter House Society held a Soft Opening for the new colonial exhibition. To celebrate the new exhibition, the Shelter House served gourmet cheese selections donated by local cheese maker Stefanie Angstadt of Milkhouse Creamery located in Oley, PA. Other delicacies at the groaning board were assorted Italian meat, fruit, and related condiments. And in our celebratory mood, we served a "bit of bubbly."

In attendance were the Shelter House Board of Directors including prime mover of the new exhibition, Ken Biles, craftsman who conceived of and crafted the colonial furnishings.

Also in attendance were members of the Emmaus Borough Council including Mayor Gilbert and her husband. Mayor Gilbert told us that, prior to arriving, she and her husband had prepared themselves to visit the Shelter House by visiting our website (shelterhouseemmaus.org) to learn more about our 1734 Germanic log structure.

After introductions and opening remarks by President Jane Maulfair, visitors mingled and learned more about the Shelter House. Resident curator Dean Bortz gave a presentation about the structure and history of the Shelter House. Dean punctuated his casual and informative talk with personal anecdotes about his 43 years as resident curator of the historic site.

We noted during the afternoon that Emmaus Village is so very fortunate to be home to three historic houses: The Shelter House, Knauss Homestead, and the 1803 House.

Although it was dreary outside with the remnants of Hurricane Ian lashing out, it was warm and gemütlich (comfortable) inside as we made new friends and neighbors.



OUR FENCES WILL HAVE YOU
DANCING FOR JOY

Since 1983
**American
& Flag**
Fence






Porch, Deck, and Stair Railings
PRO INSTALLATION & DIY MATERIALS
LARGE IN-STOCK INVENTORY
PORCH, DECK & STAIR RAILINGS ★ FENCES, FLAGS & FLAGPOLES

610.437.1944 | 2738 EBERHART RD., WHITEHALL | AMERICAN-FENCE.COM

BEAR CREEK DENTAL, PC
BRENDAN BLYMIRE, DMD
Family and Cosmetic Dentistry
109 North Main St., Alburtis, PA 18011

- Exam & Cleanings
- Emergencies/Pain
- Low Dose Digital X-Rays
- Jaw Joint Relief
- Free Consultation
- Tooth Color Restoration
- Children of All Ages
- Crown & Bridge Work
- Implant Restoration
- Gum Therapy/Bleeding
- Root Canal Therapy
- No Mercury

www.bearcreekdentalpc.com
610-967-1500



Emmaus Kiwanis Club

Kiwanis is an international organization of volunteers dedicated to improving the world – one child and community at a time.

The Emmaus Kiwanis Club, serving the East Penn community for 70 years, continued its active community involvement during the summer by volunteering at the Emmaus Library's summer reading kickoff, IronPigs games, Miracle League baseball, and clean up at the Remembrance Garden.

The Club welcomes new members and looks forward to welcoming those who believe in our mission of "serving the children of the world". The Club holds its business meeting on the 1st Wednesday of the month, a program meeting on the 3rd Wednesday, and a service project or social activity at another scheduled time during the month. Club meetings are held at The Superior Restaurant.

The Emmaus Kiwanis Club is proud to bring the organization's mission to life in our community. Fall featured our annual rose sale, Wawa coupon sale, and fundraisers to support our community endeavors. Highlights of the planned activities for the remainder of 2022 include: the Lehigh Valley Down Syndrome Buddy Walk and ringing the bell for The Salvation Army, along with the Emmaus Old-Fashioned Christmas celebration and the Club's 56th annual Special Needs Holiday Party.

We ACT, We HELP, and We CONTRIBUTE, participating in and sponsoring service projects that benefit children in our community and throughout the world.

Kiwanis also contributes to the community and our children in the following ways:

- Key Clubs at Emmaus and Parkland High Schools
- Builder's Clubs at Lower Macungie and Orefield Middle Schools
- Scholarships (6) to Emmaus High Seniors graduating seniors
- Childhood Reading and Literacy Programs
- Special Needs Holiday Party
- Emmaus Old-Fashioned Christmas
- Participation in Miracle League Activities
- Remembrance Garden Clean-Up
- Buckeye Road Cleanup
- Founding member of East Penn Food Alliance

We invite YOU to join the Emmaus Kiwanis Club. The rewards in fellowship, service, and personal satisfaction are great. We would love to have you join us in our dedication to serving children. Please check our Facebook page or our website at emmauskiwanis.org for contact information.

We invite you to join us!

Real People, Real Lives, Changed by God.



LEHIGH VALLEY Baptist Church

Watch Sunday!
10:30 AM



Sunday School.....9:00 AM
Sunday Morning.....10:15 AM
Sunday Evening.....6:00 PM
Wednesday.....7:00 PM

4702 Colebrook Ave. Emmaus, PA 18049 (610) 965-4700
www.lvbaptist.org



Police News:

Identity Theft

Victims report spending approximately 30 hours and an average cost of \$500 after an identity crime has occurred. If there is the possibility that a portion of your information has been compromised, you are recommended to do the following as

quickly as possible:



- Contact the IRS immediately! Call: 1-800-908-4490 or visit www.irs.gov to complete IRS Form 14039 (Identity Theft Affidavit).
- Obtain your FREE Credit Report at www.annualcreditreport.com (always remember - if the website address has "free" in the name, it probably isn't free.) The link provided above is! Once you have your report, review it to be certain there is no unusual activity or unfamiliar charges.
- Contact the three consumer reporting agencies to place a FRAUD ALERT on your credit: Equifax (1-888-766-0008), Experian (1-888-397-3742), and TransUnion (1-800-680-7289).
- Place a "Security Freeze" on your credit. Each consumer reporting agency has this option. You must freeze all three for optimal coverage. This is FREE and highly recommended to reduce the likelihood of credit information being obtained through the fraudulent use of a Social Security number. Please read each reporting agencies information in detail.
- Contact the Social Security Administration if there are any payments registered to yours or your child's social security number. (If disability payments are direct deposit, we advise placing a lock on your SS payments. This would require ANY changes (such as address, phone, bank acct.) to be done IN PERSON. Call the SS administration at (1-800-772-1213).
- Secure your Social Security (SS) Card in a safe and protected place. Never carry your SS card or number with you or in your wallet. Memorize your number.
- Protect Your Pin Number. Be sure to never write your PIN on a card or paper, however, if you need to, never keep it near the card.
- When doing online shopping, only do business with companies you trust and look for the "s" in the <https://> part of the website. This means the site is secure.
- Passwords. Change your password regularly and don't use any part of your SS number, maiden name, or well-known information that someone else might know or be easily able to find out.
- Protect Your Credit Cards by shredding credit card receipts and never give your card to someone else to use. In case of lost cards, keep a copy, front and back, safe at home.
- Get your FREE annual Credit Report at www.annualcreditreport.com!



New Tripoli Bank

Because people are more valuable than money.

www.newtripolibank.net



- ◆ Free* Personal & Business Checking Accounts
- ◆ Mobile Banking
- ◆ Statement Savings & Money Market Accounts
- ◆ Certificates of Deposit

- ◆ IRA Savings Accounts
- ◆ First Time Home Buyer Assistance Program
- ◆ Mortgages & Home Equity Lines of Credit
- ◆ Online Account Opening

*No monthly service charge, no monthly minimum balance requirement, no per-check charges, unlimited check writing!

NEW TRIPOLI
(610) 298-8811

OREFIELD
(610) 395-8834

EMMAUS
(610) 421-4001



Cold Weather = Hot Opportunities for Thieves

With the weather turning colder, many of us warm up our vehicles in the driveway before heading out in the morning. We all prefer a nice and toasty vehicle to take off in. So do thieves! Use common sense. It is best to NOT leave a vehicle unattended while running! It is illegal while on a street or highway!

Pa Vehicle Code 3701. Unattended motor vehicle.

(a) General rule.--No person driving or in charge of a motor vehicle shall permit the vehicle to stand unattended without placing the gear shift lever in a position which under the circumstances impedes the movement of the vehicle, stopping the engine, locking the ignition in vehicles so equipped, removing the key from the ignition and, when standing upon any grade, turning the front wheels to the curb or side of the highway and effectively setting the brake.

Sitting inside your vehicle is the only way to ensure that it isn't taken from your driveway while it's warming up. But if you insist on warming it up, keep a constant watch from a window or doorway. Don't open the door of opportunity to become a victim!

Parking Lot Prowlers

With shorter daylight comes an increase in people walking through parking lots looking for an opportunity to steal. Take the following precautions to help ensure that this does not happen.

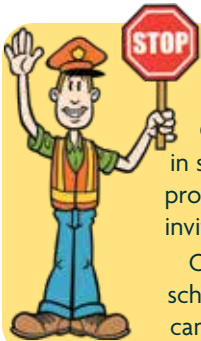
- Never leave valuables in plain view.
- Hide chargers and accessories that could indicate electronics are inside.
- Remove garage door openers, key cards, or other keys.
- Park in well-lit areas at night. Always keep your head up and be aware of people around you, – and
- If You See Something, Say Something!

Porch Pirates Can Steal Your Joy

We hear about them often around the holiday season. Let's not give them a chance to make you their victim! "Porch Pirates" follow delivery trucks around and when they see an opportunity - they strike!

Take steps to protect your delivered packages:

- Ensure you are home when delivery is scheduled.
- Have packages delivered to a trusted neighbor who is at home.
- Have packages delivered to your work.
- If available, use store pickup.



Crossing Guards Needed

The Emmaus Police Department and the East Penn School District are seeking additional volunteers to serve as Crossing Guards for the 2022-2023 school year. Can you spare a small fraction of your time? Are you interested in serving among the ranks of our existing staff of dedicated Crossing Guards? The Emmaus Police Department will provide you with the equipment and training necessary. Just a few hours a week and you will be rewarded with an invitation to a winter banquet and a summer picnic!!

Over the years, the Emmaus Crossing Guards have contributed to the safety of our children traveling to and from school each day. It is critical that we ensure their safety in the future. Will you help us? If you are interested, or you can help, please call the **Emmaus Police Department** at 610-965-0722. We will do the rest.

Smart911 Rave Alert System

The Borough of Emmaus has recently launched the Smart911 Rave Alert System for auto dial announcements. Smart911 is a free, private, and secure portal that currently services over 31 million users. By opting into Smart911, you can provide the Borough with your information and choose to receive auto dial announcements via text, email, telephone, or all three. The information that the Borough has on file through Swiftreach 911 has been transferred to Smart911, so there will be no interruption in the system. All Borough residents are encouraged to create a profile now with Smart911 at www.smart911.com/smart911/ref/reg.action?pa=PABoroughOfEmmausPW to provide the Borough with up-to-date information or visit the Borough's website to register. After you have registered, you can visit www.smart911.com to access, update, or change any of your personal information.



Update on Borough Water

It has been a little while since we have updated you about our progress with remediating the PFOS and PFOA issues in the Borough water system. It is not because we are ignoring the issue, but quite the opposite. The last time we wrote about the system, we had informed the community that we were in the process of purchasing a carbon absorption system that would treat the well that was currently shut down. At that time, we were told that the cost would be about \$350,000. The purchase of that system has not occurred as of this point. After consulting with Pennsylvania DEP and our engineers, the Borough learned that there is a way to remediate both wells, which is what PA DEP requested. Since both wells are treated through the same main lines, it was recommended that we should treat both at the same time. Therefore, in their Consent Order with the Borough, PA DEP has required that the Borough conduct a full investigation and feasibility study of every single option that could be possible to explore to remediate the water issue prior to receiving their approval to install a system. We have spent many months working with PA DEP to conduct this feasibility study and all the different options that are available. While the study is not yet completed or approved, we will share with you the current progress, as well as the most recent testing levels.

**PFOA
PFOS**

The Borough is now testing for PFAS every quarter in both Well # 1 and Well # 2. We are also testing the other wells in the Borough as well. At this point, levels in those wells are well within the acceptable range levels. However, testing results that were received on August 1, 2022, show that our system exceeds EPA Lifetime Health Advisory Level for PFOS / PFOA for both Well # 1 and Well # 2, as you have previously been informed. The Lifetime Advisory Level for PFOS / PFOA is 70 parts per trillion (70 ng/L), and has recently decreased per PA DEP's newest acceptable level guidance. In recent weeks, the Commonwealth of Pennsylvania adopted new regulatory requirements of 14 ppt for PFOA, and 18 ppt for PFOS. PFOS / PFOA levels exceeding this level were found at both Well #1 and Well # 2 within the Borough. Both wells share the same aquifer. Well # 1 tested at an elevated level of 232 ng/L per tests conducted by the Borough. Well # 2 tested at 1560 ng/L per tests conducted by the Borough. Well # 2 has been disconnected and deactivated since initial test results were received in October 2021. Well # 1 remains operational, as our studies have shown that we cannot adequately supply water to the Borough without this well operational.

Because we can treat both systems at the same time, we were required to completely re-engineer the original treatment proposal. The carbon absorption system is now estimated to cost \$1.1 million, as the system would be required to treat over 1,100 gallons per minute, as opposed to the original estimate of 550 gallons per minute. Rather than allowing us to move forward to immediately purchase the system, PA DEP has required the Borough to explore every possible option. Because we are regulated by PA DEP and we must obtain permits from PA DEP, we are required to comply. However, a complete feasibility study takes months, as every single option must be completely vetted and engineered.

Here are the options that we are exploring:

- Calgon originally designed a carbon system that was undersized, however, has recently engineered a new system based on serving both well # 1 and well # 2. However, we have not received any calculations regarding the chemicals and effects that the run-off from the system could possibly have on sewage treatment. At this point, the Calgon system seems to be the option we are leaning towards; however, we have other options to explore. This system is expected to cost \$1.1 million and will require a large building to be constructed to house the treatment system. We must calculate the waste load and chemical impact that could occur, as it can affect the chemical treatment at the sewer plant. There is an estimated cost of \$35,000 per year to maintain the system.
- We are also currently working with a company called Knappe Associates. The company recently took 8,000 gallons of water from well # 2 to run a pilot study to see if it is feasible that their system may be a long-term solution, as they use the ion exchange solution, which may include a carbon absorption system on the end of it.

Info from their offer:

- Our full onsite test will have a two-prong attack. We will be using 50% of the water we collect within our standard offering to figure out the most optimized regeneration process which will incorporate a methanol recovery system. Depending on the % methanol & % Salt mix will determine how large the recovery system will need to be. Once this concentration is figured out, we plan on loading our resin and using an electrochemical process to break down the loaded waste brine stream even further to acceptable ranges for a wastewater plant to deal with.
- Our secondary approach utilizes our proprietary resin in a fixed pressurized bed. We estimate roughly (2) years before having to regen based on the current 70ppt rating. However, we need to run it under the conditions of reducing down to a 14-18ppt. This method will allow us not to have a waste stream that needs to be permitted.
- We won't be able to fill out the wastewater report until we know exactly what the waste brine stream will consist of. This two-prong method will also allow us to figure out with the most cost-efficient solution is for this application.
- Since their offer was initially made, we have reminded them that the Borough's target PFAS concentration would be "as close to zero as possible" and they have acknowledged that in other communications with me.
- The pilot study takes four months and begins in July. Results should be pending by early winter.

This method could be less costly in the long-term for the Borough, however, there is not much of a proven track record in Pennsylvania municipalities with this type of treatment system. This means that PA DEP would require the Borough to conduct a 2-year pilot study as we run the treatment system. PA DEP has also issued concerns that the ion exchange system may cause other chemicals to develop in our water system. Our engineers would need to figure out if our air stripper system can remove those chemicals before they hit the drinking water.

- We are also partnering with Lehigh County Authority, employing Gannett Fleming as a hydrologist, to explore the interconnection between the City of Allentown and the Borough of Emmaus. This process will take no less than 4 months to complete. The process began in August. If it is found to be feasible to connect, and this is found to be a long-term solution, it will take well over a year to design and construct the interconnection, with the cost possibly exceeding several million dollars. However, we will not know this until the study has been completed. We expect the results of the study by November. This is a long-term, and very expensive possible solution, and the connection would not occur for at least a few years, as there is a lot of infrastructure that would need to be set in place. Even if we do not choose to do this as our solution, we do believe that we need to continue these discussions for the future, for at the very least, emergency back-up solutions.
- We are also exploring the possibility of shutting down well # 1, as this would bring the Borough into compliance theoretically, however, we have a possible disaster if we do that. On average, Borough residents consume between 1.3 million and 1.5 million gallons of water per day in the Borough. With well # 2 shut down, the four remaining wells produce enough water handle demand as well as any emergency issues, such as a fire, or even a leak in the system. If we shut off well # 1, we will only be pumping, on average, 2,389,536 gallons per day out of our three remaining wells. This would leave less than 1,000,000 gallons per day of excess production on an average day. While this may sound suitable, it is dangerously low. In the past 10 days, the Borough has replaced three water leaks. The last water leak was in the amount of 1.1 million gallons and took just under 24 hours to find and repair. This would have depleted any possible excess reserve and would have jeopardized the Borough's ability to supply the community with water. We asked PA DEP if we could shut the well down and turn it on only for emergency situations. We would then notify our residents through an autodial an electronic notification if we had to do this. In our minds, this would eliminate PFAS from getting into the system, but we would supplement when we absolutely needed to. PA DEP would not agree to the idea, as they would require that the Borough would have to go through a full permit application, which isn't feasible. Obtaining a permit to turn water on and off takes months, not hours, therefore, they PA DEP informed us that this is not a feasible option, and that they believe the well must stay on.
- One other option that the Borough is exploring is simply digging another well in town. As we employ the hydrologist, we are seeking their guidance regarding possibly digging an additional well in the community and simply shutting off both well # 1 and well # 2 on a permanent basis. DEP out of Bethlehem reached out to us to discuss possible financial and technical assistance with this. It will cost several hundred thousand dollars to test dig wells and obtain adequate sampling. It will cost several million dollars to build a well system and well house. PA DEP out of Harrisburg warned that, just because we relocate another well, we might still be pulling from the same plume of water, which would cause that well to be contaminated as well. They informed me that our last Wellhead Protection Plan that was conducted was very thorough and examined all of the directional flow of our water system. Therefore, they recommended that we give that information to our hydrologist, and they would most likely be able to determine from that what locations might be feasible. This suggestion literally saved us tens of thousands of dollars in engineering costs. This option seems less and less feasible as we move forward.
- We recently also met with another company called Suez / Veolia. They are similar to Calgon. They are taking water samples and running analysis as well, as they feel that their systems may be feasible as well. Additionally, they informed us that they have a possible temporary solution, as they have "mobile" treatment units, where they have treatment systems inside of trailers that they can temporarily put on a property to treat their system until the permanent solution is built. This temporary solution is obviously intriguing to the Borough, especially if it can treat the water to an acceptable level of PFAS to help buy time for the permanent solution. We have received their test results back and will be meeting with them again in the next few weeks to discuss their possible solutions. The concern for the temporary treatment system is that it can handle at least 600 gallons per minute and reduce the PFOS / PFOA down to acceptable levels before it hits our system. If their results show that they can, this is a very viable, short-term option.

PA DEP has required that the Borough conducts a full feasibility study including every one of these options. Pilot studies in testing the chemical removal possibilities, flow impacts, and side effects to sewage treatment take months. The studies from the hydrologists also takes several months at a cost of approximately \$30,000 to conduct. It is vital to the Borough, PA DEP, and our citizens, that we are sure that whatever removal option is selected, is a long-term, permanent solution that properly removes the PFAS chemicals from our drinking water. The pilot testing processes as well as the complete feasibility studies are necessary to properly understand what the correct option shall be. While this has certainly taken much longer and is much more complicated than we hoped, it is the correct and necessary approach, as we cannot afford to simply put a system and hope it works. That is not a financially responsible decision, it is not an ethically responsible decision, and it is especially not the responsible decision to ensure the health and safety of our citizens. We are working every day to try to resolve this. We apologize that this process has taken so long, but we need to make sure that the treatment is appropriate and approved by PA DEP, per their requirements.

We also encourage you to continue to learn as much as you can about PFAS. We have included some educational information in past newsletters. We stated that we continue to learn more and more about PFAS, as more studies continue to come out. Several studies have shown that fish and deer have both tested positive for PFAS in Bucks County. Most recently, a study was released that there are high concentrations of PFAS in our rainwater, both locally and around the world, as it was even found in precipitation as far south as Antarctica, per a study by Stockholm University, as published in *Environmental Science and Technology*.

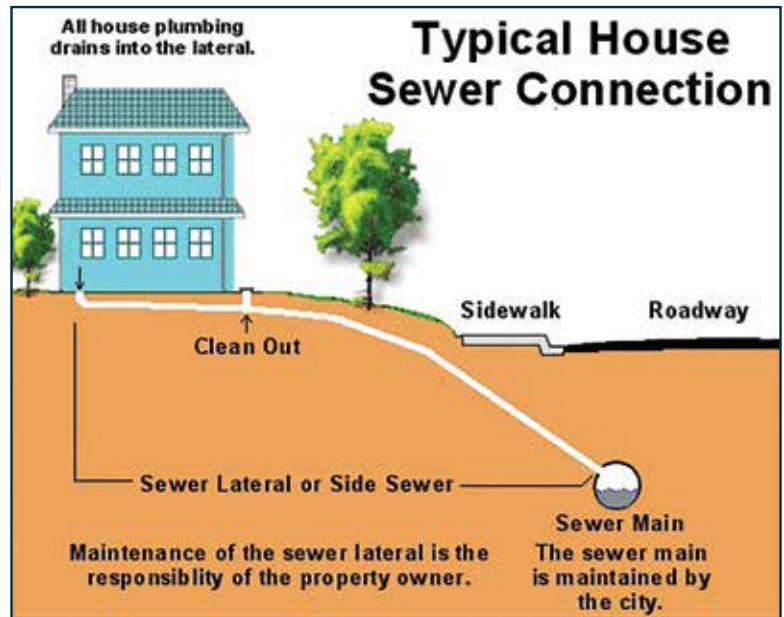
Sewer Lateral Inspection Program

In January 2019, Emmaus Borough Council adopted an Ordinance to require building sewer and lateral inspections any time a house is transferred or sold within the Borough. This was as a result of the PA DEP and EPA mandates requiring the community to eliminate the stormwater that is hitting the Allentown sewer plant. The Borough continues to invest millions of dollars into improving and removing stormwater from the main system, however, this is a key component of the infiltration and inflow that is hitting the system. The Ordinance took effect April 2019.

Ordinance No. 1185 requires anyone that is selling or transferring their property to have their sewer lateral inspected via a camera. Any licensed plumber who has the capability to conduct camera inspections may be used, or the property owner can contract the Borough to conduct the inspection. An electronic copy of the camera inspection as well as a report with the findings must be submitted to the Zoning Officer at Town Hall. If the result of the inspection demonstrates that water is infiltrating the system through deficiencies such as cracks or breaks in the line, or via root intrusions or other systematic failures, the property owner must fix or replace the building sewer or lateral prior to the sale of the property. The Borough monitors property transfers through data submitted by Lehigh County each month. If an individual fails to have the inspection completed, and the Borough receives the property transfer information, penalties are applied including fines.

The average inspection costs approximately \$225 - \$300. If there are serious issues with the sewer lines, it could cost much more, however, it is important to note that if there are issues with your lines, it means that pollutants are seeping into the ground and leaching into our potable water systems and / or rain water is hitting the sewer system, helping to cause overflows during heavy rains into the Lehigh River, meaning raw sewage is hitting the river as well. For these reasons, as well as due to the state and federal mandates, we need to ensure that the entire sewer system is working as it is designed and we are doing our part to eliminate these issues.

There are numerous provisions in the Ordinance that we encourage you to read. You can access Ordinance No. 1185 via webpage <https://ecode360.com/EM3676/laws/LF1069677.pdf>.



Modern

Plumbing & Heating

Electrical | Drain Cleaning | HVAC

304 East Main St. • Macungie, PA
modernplumbingandheatingcompany.com

610-435-2081

PA 100909 Since 1973

MP NOTARY SERVICES

— PENNSYLVANIA —

MPN-2021

visitPA.com

Associated with Mechanics Plus Towing

EMMAUS, PA

484-519-1138

We Offer a Variety of Services:

- Title Transfers
- Issuing Plates
- Renewals
- Notarization
- Friendly Atmosphere, etc.

SO COME CHECK US OUT!

Curbside Leaf Collection

The Borough of Emmaus will continue its 2022 Curbside Leaf Collection through Friday, December 9th. The Borough is unable to set specific pick-up dates for leaf pick-up for individual streets throughout the town and recommends that leaves are raked out to the curb line the beginning of each week. The Public Works Department will collect leaves Monday through Friday, however, please be advised that if the Borough encounters winter weather and the Public Works Department needs to plow the streets, any leaves in the road will be plowed. The Public Works Department will make every effort to get the roads cleaned up before the winter. For **FINAL COLLECTION**, please have your leaves out on Monday morning (December 5th) of the final week. Once the Public Works Department has made its final pass on your street, **they will not return**.



- Please rake all leaves to the curb into long narrow rows not more than 18" into the road. Leaves placed on the sidewalk will not be collected. The Public Works Department will not empty bags or other containers; this is the responsibility of the resident. Branches, shrubbery, grass, garbage, dog waste, and other building materials will not be picked up.
- Leaves will not be collected on private property. If leaves are not in place when the crews go by, they will be picked up on the following round through the Borough. No "return trips" will be made to pick them up.
- Residents who have areas designated as "No Parking" (yellow painted curbs) are encouraged to pile leaves at these locations for easier pick up.
- Piles with anything other than leaves **will not** be picked up. These objects will cause damage to the leaf pickup units and put them out of service at a great expense of time and money to the Borough and its residents.
- Do not place tarps over your leaves. The Public Works Department will bypass them, and they will not be collected.
- To help facilitate the collection of leaves, please keep all vehicles away from the area where the leaves are piled. The Public Works Department will not rake piles of leaves out from between parked cars or from under them.
- Do not pile leaves on or around storm drains! This will cause flooding issues and create unsafe driving conditions.

Thank you for your cooperation. For additional leaf/yard waste disposal, the Compost Site is also open for drop off Monday, December 12th through Friday, December 16th.

Compost Site Hours of Operation

Closed on Holidays

Compost Site Hours through Saturday, December 3rd**

Monday and Friday, 7:30 a.m. to 2:30 p.m. (Loading 7:30 a.m. to 2:30 p.m.)

Wednesday, 7:30 a.m. to 7:30 p.m./or dusk. (Loading 3:00 p.m. until dusk)

Saturday, 8:00 a.m. to Noon. (No Loading)

****The Compost Site will close for the season on Saturday, December 3rd, but will be open on Monday, December 12th through Friday, December 16th from 7:30 a.m. to 2:30 p.m. (No Loading), for final leaf and yard waste drop-off. The Compost Site will also be open Monday, January 16th through Friday, January 20th for the disposal of Christmas trees.**



Volunteer Opportunities

The Borough of Emmaus loves its volunteers and has openings on several Boards and Commissions! If you would like to be part of the process and volunteer for your community, we encourage you to explore one of these opportunities:



Emmaus Arts Commission – 2 vacancies. This Commission explores different artistic opportunities in the community and sponsors many of our wonderful community events. Some of the recent projects include the gnome project, painting the picnic tables at the Triangle, the fire hydrant paint project, the Student Film Festival, and the SnowBlast event in February.

Joint Environmental Advisory Commission – 2 vacancies: This Advisory Council is a joint board with Upper Milford Township and the Borough of Emmaus. The Council oversees several events and projects throughout the year, including Earth Day, public education events, and different environmental projects such as stream bank restoration work along our creeks. Preferred Experience / Qualifications: environmentalist, knowledge of environmental concerns and issues, event planning.

Time Commitment: One meeting per month in either Emmaus Borough or Upper Milford Township.

Recreation and Entertainment Commission – 5 vacancies. This Commission oversees a variety of community events and activities. The Commission oversees the Summer Concert Series, Movies in the Park, and events like car shows, Community Day, and others that the Commission finds beneficial throughout the year.

Preferred Experience / Qualifications: event planning, parks and recreational professional, attends community events, fundraising experience.

Time Commitment: minimum of one 1-hour meeting per month. During spring, summer, and early fall, time commitment will be more.

Shade Tree Commission – 2 vacancies. This Commission oversees the planting, removal, and trimming of trees located in the Borough's right-of-way, as well as offering advice and suggestions on how to properly care for trees.

Preferred Experience / Qualifications: arborist, understand and interpret ordinances, ability to interact with members of the Community, knowledge of shade trees.

Time Commitment: approximately one 1-hour meeting per month.

Zoning Hearing Board – 1 vacancy: Board members form an impartial judicial body to decide appeals to the Zoning Hearing Board for variances and other matters related to the Zoning Ordinance.

Preferred Experience / Qualifications: knowledge of zoning laws, building / construction experience, understand and interpret Zoning ordinances, legal background / experience.

Time Commitment: approximately one 2-hour meeting on an as needed basis, roughly 7 times per year. Time commitment will be more during preparation time for hearings.

To apply to volunteer, simply download the form at this link, fill it out, send it, and we will be in touch. <https://www.borough.emmaus.pa.us/wp-content/uploads/2020/11/Board-and-Commission-Information-Sheet-2020.pdf>

GROSSMcGINLEY LLP
ATTORNEYS AT LAW

Your trusted counselSM serving the Lehigh Valley
and beyond for nearly 50 years

**Proudly Supporting
the Emmaus Borough**

**DEDICATED PEOPLE
INNOVATIVE SOLUTIONS
PROFESSIONAL SERVICE**

GrossMcGinley.com 610.820.5450

BEST LAW FIRMS
USNews
2022

BUSINESS SERVICES | EMPLOYMENT LAW | TAX LAW
ESTATE PLANNING | MUNICIPAL LAW | REAL ESTATE
FAMILY LAW | CRIMINAL DEFENSE | LITIGATION | SPORTS LAW

TRUST THE EXPERTS

Local, responsive, and dependable
service for all of your heating and
cooling needs.

Quality Since 1960

BURKHOLDER'S
Heating & Air Conditioning, Inc.

WWW.BURKHOLDERS-HVAC.COM
610-816-6889
383 MINOR STREET, EMMAUS, PA 18049
PA 011533

Go Paperless!

Not sure if you received this quarter's water/sewer or refuse bill? Are you worried about mailing your bills and them getting to their destination by the due date? As a way to offer you more choices in how you pay your bills, the Borough of Emmaus offers paperless billing, online bill payment, and credit card payments to pay your utility bills.

All you need is an Internet connection through a web browser and an email address. Once you sign up for your account and start using the service, you will wonder why you ever waited so long to sign up!

It's simple to use. Every quarter we will send you a reminder email to let you know when your bill is available online. Then, just log in to your account at XpressBillPay.com and view your bill. It's formatted like your paper statement so it will look familiar to you. When you are ready to pay your bill, select a payment type. You can pay with a credit card, debit card, or electric funds transfer. Then enter the information and you're done. It's that easy, and it only takes a few minutes each quarter.

It's free to sign up, but there is a \$3.50 convenience fee to use the single payment, as we are charged transaction fees by the credit card companies, however, automatic reoccurring payments are free.

We offered this service at your request. You asked and we delivered! To sign up, just go to www.borough.emmaus.pa.us. On the home page, click pay your bills.

Q&A About Online Bill Payment

Q: Does it cost anything to sign up for online bill payment or paperless billing?

A: No. It's free to sign up for paperless billing and online bill payment and to use the service. There is a \$3.50 convenience fee for one-time payments to help cover the costs from the credit card companies.

Q: What is Xpress Bill Pay?

A: Xpress Bill Pay is the company that the Borough has partnered with to handle paperless and online bill payment.

Q: What payment choices do I have using Xpress Bill Pay?

A: You can pay your utility bills with a credit or debit card, or you can transfer funds directly from your checking account.

Q: What will my paperless bill look like online?

A: It is formatted like your paper statement, so it will look familiar to you.

Q: What other information is available?

A: You can view up to a year's history of your account online, so you can compare your current bill to a year ago.

Q: Do I need to pay my bills from my computer?

A: Not at all. You can continue to pay or bill via mail or in person.

Q: How do I know my payment went through?

A: Once the transaction is complete, you will receive an email receipt to confirm that your payment went through.

Q: Is my information safe?

A: All of the transactions are held on secure servers. As long as you don't give out your password, only you will be able to access your account. Plus, your personal information or email address will not be sold or rented to third parties for marketing purposes without your permission.



**SIGN UP
FOR
PAPERLESS!**

xpress BILL PAY

ALREADY HAVE AN XPRESS BILL PAY ACCOUNT?

Step 1: Go to www.xpressbillpay.com and log in

Step 2: Click "View Bill" under the account you would like to be paperless

Step 3: Locate the "Paperless (Off)" button

Step 4: Click the button to turn "Paperless (On)"

REGISTER AND SIGN UP FOR PAPERLESS:

Step 1: Go to www.xpressbillpay.com

Step 2: Click "Sign Up" on the top of the screen

Step 3: Fill in your email and password, then click in the "I'm not a robot"

Step 4: Complete the short registration form and click "Next"

Step 5: Go to your inbox and open the verification email, click "Verify your email address for xpressbillpay."

Step 6: Select your billing organization

Step 7: Enter your account number and last name, exactly as it appears on your bill, select "Locate Bill" and select "Locate Account"

Permits are Required

Do you need a building or zoning permit? Applications are available online! Download applications for permits right off of our website at: www.borough.emmaus.pa.us.

On the website home page, under the Residents drop down menu, click on "Forms/Applications" and choose which application you need. Simply fill it out and return the completed application to Borough Hall at 420 S 10th Street, so we can begin processing your permit. If you have any questions about permits, please call the Code Enforcement Officer at 610-967-1322 or email rhammond@borough.emmaus.pa.us or bbilhmemer@borough.emmaus.pa.us.

Some examples of permits that the Borough of Emmaus requires are: roof repairs, building repairs or remodels (causing structural changes), footers, foundation, framing, plumbing, electrical, signs, fences, sheds, dumpsters, demolition, driveways, pools, and zoning.



Moving Permits

A moving permit is required for any individual or family moving in, out, or within the Borough. The permit application can be obtained from the Cashier at Town Hall, 420 S 10th Street, or by visiting the Borough website at: www.borough.emmaus.pa.us. The permit and the \$1.00 fee are filed with the Cashier at Borough Hall. If you have any questions, please call Yashira at 610-965-0702.

Call Before You Dig



**Know what's below.
Call before you dig.**

If you are planning on digging, call Pennsylvania One Call System, Inc. (POCS) three business days before you dig at 1-800-242-1776 or 8-1-1. The call center is open 24 hours a day, 7 days a week, every day of the year. PA Act 287 as amended requires excavators as well as private landowners to call POCS three days prior to any type of digging occurring with powered equipment. Mark your excavation area in white paint before calling with a dig notification.

By calling, you allow the facility owners the opportunity to locate and mark their underground facility in advance of the planned excavation (gas and liquid pipelines will mark underground facilities using yellow stakes, flags, or paint).



**Hendricks and Sons
Auto Center**

SALES, SERVICE & COLLISION

**PA Safety Inspections &
Emissions**

ASE
PAINTS
BUMPER
TO
BUMPER
TECHNET

SERVICE: 610-967-5507

202 Main St. Emmaus

www.hendricksandsonsauto.com



HARNED DURHAM
PROPANE • OIL • HVAC ENERGY

Family Owned & Operated
Serving The Lehigh Valley
& Surrounding Areas
For Over 85 Years

- Fuel Delivery
- HVAC Installations & Repairs
- Maintenance Agreements
- 24-Hour Emergency Service

610-965-3424

4893 Buckeye Road • Emmaus
HarnedDurhamEnergy.com

Financing Available!

VISA M.C. DISC

PA159915



Alter Ego
SALON AND SPA

610-421-8585
500 Broad St
Emmaus, PA 18049

E360 Code



The Borough has contracted General Code to provide citizens with an easier way to access our Borough Code. The E360 Code allows you to enter a certain word and it will provide every part of our Borough code that contains the word. The program also allows us to access the relevant information that you are seeking in a much quicker and efficient manner. The program only stores Ordinances that have been codified and is usually about one to two years behind on current Ordinances therefore, we recommend that you contact Borough Hall if you are researching a more recent Ordinance. E360 Code can be found on the Borough's website. On the website under "Government," click on Codes to locate the Borough's Ordinances.

Post-Summer After Sun Care Tips

By: Board-Certified Physician Assistant Nicole Schnell, PA-C

Summer's harsh UV rays can leave their mark on your skin and hair, one that's easier to spot in the dry winter air. As the weather starts to change from the hot summer sun to the crisp days of autumn, it's time to treat your sun-stressed skin with a little TLC.

What the sun does to our skin and hair

When the days get shorter, our tans start to fade and our skin starts to look pale and stressed, showing some of the consequences of those summer months. The top layer of skin has often thickened and discolored in response to the sun, leading to brown spots and flaking. The sun has also damaged the supporting tissues of our skin including collagen fibers and elastin, leaving our skin more wrinkled in appearance, and more prone to bruising due to increased fragility of blood vessels.

Our hair can also be affected by the sun and summer exposures. UV rays can impact hair, causing it to feel dry, brittle, and frizzy. Chlorine from swimming pools also commonly damages hair by dissolving into hair lipids, which are fatty acids in our hair that contain natural oils to coat the hair for protection. When your hair is submerged in a chlorinated pool, the chemical bonds of the lipids break down, causing split ends and damage.

Protection when you're in the sun

The number one way to protect your skin from UV rays is with prevention using sunscreen and sun avoidance. While sunscreen is especially important during the long, hot summer days, don't let the shorter days of fall and winter fool you. Even though the sun isn't shining as brightly, our skin still needs protection from the harmful UV rays which penetrate even on the cloudiest days. UV rays specifically shine all year round, resulting in sun damage that can lead to premature aging, dryness, wrinkles, and pigmentation.

For many, protecting their hair is another component of sun protection. You can provide strength to your hair by wearing wide brim hats when outside, wearing swim caps when in the pool, washing your hair immediately after swimming and even using hair products that contain SPF.

Treatments for post-summer rejuvenation

There are many products that can be purchased in your neighborhood store without a prescription to help treat post-summer skin when faced with the colder winter months.

- Facial Moisturizer can help hydrate our skin from dryness that occurs when it gets colder outside, and body creams can hydrate our arms, legs and trunk. The back and legs are particularly prone to dryness.
- Use of a good chemical exfoliator nightly (such as a retinoid or retinol) can even out skin texture and tone, and even help prevent wrinkles by building up the collagen support network under the skin.
- Vitamin C serums can be applied in the morning prior to a facial moisturizer. These work as antioxidants, helping repair some of the damage caused by the sun.
- Keep your face wash gentle. Harsh cleansers can damage sensitive skin as winter approaches.
- Conditioning treatments and frequent trims can help repair some of the hair damage caused by sun and chlorine.

When to seek medical help

You should inspect your skin monthly for new bumps, spots, scaly patches that aren't healing, and new moles or dark spots. Annual full-body skin cancer screenings can help catch any abnormalities that you may miss yourself. Skin cancers are highly treatable when detected in time, but early diagnosis and treatment is essential to avoid their spread to surrounding tissue, nerves, and bones. If you are concerned about a spot on your skin, see a dermatologist as soon as possible to get it evaluated.

Our dedicated and passionate team at Dermatology Partners treats a full spectrum of diseases of the skin, hair, and nails and specialize in the detection and treatment of skin cancers, including Mohs surgery. Our offices also offer immediate appointments, so you do not have to wait if you detect a suspicious-looking mole, freckle, or spot on your skin.



East Penn Upholstery

Custom Upholstery
Residential - Commercial - Automobile

DAVID W. ERBE

E-mail: eastpennuphol@aol.com

Emmaus, PA 18049

PHONE/FAX: (610) 967-4658

FREE ESTIMATES
Pick-Up & Delivery

10%
Fabric
Discount
w/this ad



FAST, FREE
quote in person.

A master's touch at a sweet price.



610-351-9889

Master LIC#208
Reg #PA024396

**ROBINSON
PLUMBING**

feel good about your plumber





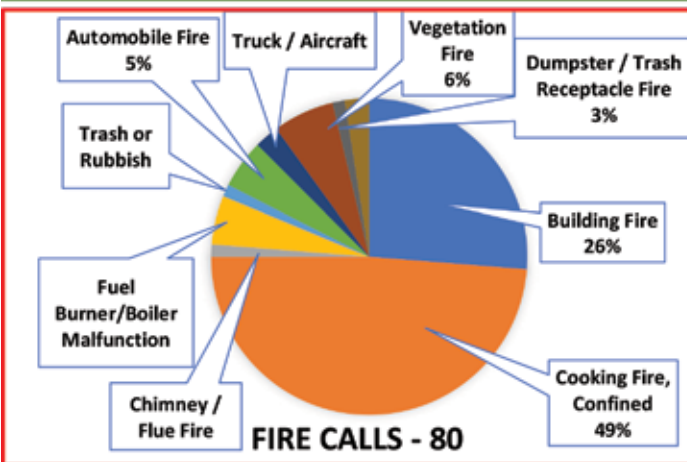
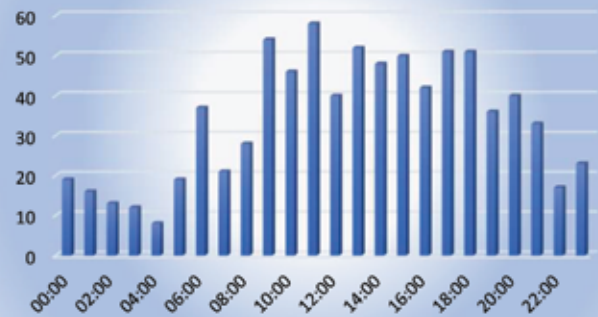
EMMAUS FIRE DEPARTMENT in Action

*Protecting Life and Property
in Emmaus since 1871*

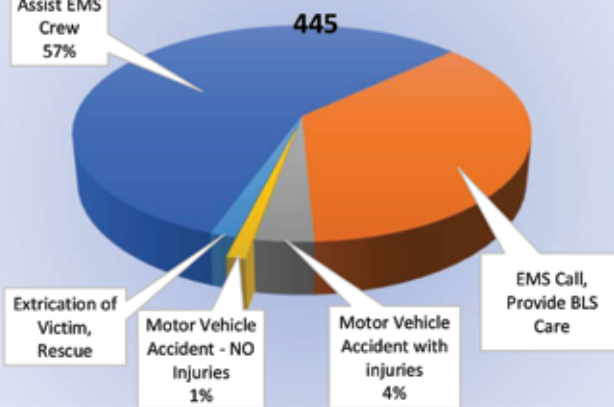
2022 Responses Jan. 1 to Sept. 30

Type Code	NFIRS Incident Type	
100	FIRE	80
200	Overheat, Scorch, Rupture (NO FIRE)	4
300	Rescue and EMS	445
400	Hazardous Condition	36
500	Service Call	93
600	Good Intent Call	66
700	False Alarm / Call	90
800	Severe Weather & Natural Disaster	0
900	Special Incident Type	0
TOTAL:		814

Responses by Hour of Day



RESCUE & EMS RESPONSES



We're here for your family.

We treat a full spectrum of diseases of the skin, hair and nails,
as well as specialize in the detection and treatment of skin cancers



DANIEL SHURMAN,
MD, FAAD



ADEL HAQUE, MD



JESSICA DIJULIO, MA,
MMS, PA-C



NICOLE SCHNELL,
PA-C

IMMEDIATE
APPOINTMENTS
AVAILABLE

MACUNGIE LOCATION
3760 Brookside Rd • 610-770-2708
WWW.DERMPARTNERS.COM



DERMATOLOGY
PARTNERS

MACUNGIE



Heating Season has Arrived Are You **SAFE?**

Most Carbon Monoxide poisonings occur in the Home.
So YOUR Fire Department will install Free Smoke and
Carbon Monoxide alarms in the homes of Emmaus.

To get your free detectors call the Emmaus Fire Department
Business Office, Monday through Friday between 8 am and 4
pm, and we will gladly schedule a time to install your smoke
and CO alarms.

Supplies and installation appointments are limited. We will try to accommodate
all callers, but requests will be honored on a first call, first serve basis. Additional
restrictions apply. Not suitable for commercial properties. Call for details.



EMMAUS FIRE DEPARTMENT

100 N. 6th Street
Emmaus, PA 18049

CALL:

610-967-5630

To Protect Your Family

Bank
with us.
It's a
homerun.




First
Commonwealth
FEDERAL CREDIT UNION

JOIN TODAY: firstcomcu.org

First Commonwealth FCU is federally insured by the NCUA.

We live here. We buy here. We sell here.™

 **WESLEY WORKS®**
REAL ESTATE

610.928.1000 | WESLEYWORKSREALESTATE.COM



PA License # 98046717



Borough of Emmaus
28 South 4th Street
Emmaus, Pennsylvania 18049

ECRWSS EDDM
Postal Customer

Presort Standard
U.S. Postage PAID
Lehigh Valley, PA
Permit No. 550



Winter 2022



This Community Newsletter is produced
for Emmaus Borough by **Hometown Press**
(215) 257-1500 • All rights reserved®



To Place An Ad Call Mr. Kim Kriebel At Hometown Press • 267-371-2833 • klk14http@gmail.com Nov 22

D.E. Cressman
INSURANCE AGENCY INC.

**Become a Member
of our
Growing Family**

Lowest Rates with a Personal Touch
Auto - Home - Business - Life

For a Quick Quote text 484-2-INSURE

2310 Walbert Ave., Allentown • 610-433-1568 • www.Choosecressman.com



**Absolutely Incredible
Smiles**

"The staff at Ai is absolutely amazing! Everyone becomes your friends and you truly feel like part of their family. The building is immaculate and their chairs are super comfortable. Their community involvement is over and above. They set high standards and cheer you on the whole way. I couldn't have asked for a better place to go for my braces."

Alexis Deputy

550 Harrison Street, Emmaus, PA 18049
610-965-6898
info@aiortho.com

Call today for your free consultation!