

AROUND TOWN

Established 1859

Winter 2019



INSIDE THIS ISSUE

Borough Directory.....	2
Volunteers of the Year 2018	3
Emmaus Creative Arts and Innovation Center.....	4-5
Emmaus Farmers' Market	5
East Penn Neighbors Helping Neighbors	6
Crossing Guards Needed.....	6
Emmaus Main Street Partners.....	7-8
Emmaus Historical Society	9
Emmaus Public Library.....	10-11
National Council on Aging.....	12-13
The Knauss House.....	14
Emmaus Commemorative Garden Remembers.....	15
Shelter House	16
Winter Storm Water Tips	17
2020 Census.....	17
Explorer Post 763.....	18
Welcome Ryan Wessner.....	19
Permits.....	20
Emmaus Shade Tree Commission	21
Emmaus Police Department.....	22
Sewer Lateral Inspections.....	23
Call Before You Dig	23
Emmaus Arts Commission.....	24
Dumpster Day.....	25
Garbage & Recycling	26-28
Curbside Leaf Collection	29
Compost Hours	29
Snow Plowing Tips & Reminders .	30
Adopt A Hydrant.....	31
Christmas Tree Collection.....	31

Holiday Greetings

The leaves are down, and the crisp, cool weather is in the air. That can only mean one thing! It's holiday season again! Soon, we hope you and your family will be gathering around the dinner table enjoying some freshly cooked turkey or ham, pumpkin pie, and enjoying the company of one another before closing the evening out with a football game, or long-awaited nap. Whether you celebrate a religious holiday or just simply enjoy the holiday season, Borough Council, Mayor Gilbert, and all of the employees and volunteers of the Borough of Emmaus want to wish you a Happy and Healthy Holiday Season.

If you know anything about our wonderful community, you know that the holidays are a time for great festivals, celebrations, and events throughout the Borough. Now that we have settled down from our spectacular and spooky Halloween Parade and the best Halloween Race in the country, it's time to ramp up for more celebrations!

The Emmaus Historical Society kicks off the holiday festivities on Friday, December 6th. The museum will be open from 4:00– 8:00 p.m., with wine and cheese, the debut of 2019 Train Putz, vintage holiday decorations, and live music with the children's choir of St. Ann's School and the Emmaus Moravian Church Choir with Tom Baker, organist.

On Saturday, December 7th, one of the most popular events of the year will be held. Old-Fashioned Christmas will be held at Triangle Park from 11:00 a.m. to 7:00 p.m. The annual tree lighting ceremony will begin at 6:00 p.m., with the arrival of Santa and Mrs. Claus at 4:45 p.m. The event also includes a downtown window and door decorating contest, pictures with Santa, trolley rides, plenty of Christmas music, and a Cheers Trail and Bonus Bites being held throughout town from 12:00 – 5:00 p.m.

There is plenty more to do on Saturday, December 7th! The Historical Society Museum will be open from 10:00 a.m. to 8:00 p.m. with children's crafts for the Children's Tree on the Triangle from 12-4:00 p.m. The Emmaus Historical Walking Tour will occur from 1:00 p.m. to 3:30 p.m., beginning at the Emmaus Moravian Church.

On Wednesday, December 11th celebrate a visit from the Belsnickel portrayed by Keith Brintzenhoff followed by the annual Historical Society member Christmas party

continued on page 2



Borough of Emmaus

28 South 4th St.
Emmaus, PA 18049
610-965-9292 • Fax: 610-965-0705
www.borough.emmaus.pa.us

Borough Contact Information

Town Hall (Main #)	610-965-9292
Borough Manager	610-966-6357
Pavilion Rentals	610-965-0702
Public Works 24/7	610-965-9288
Refuse/Recycling	610-965-0702
Tax Collector	610-967-4598
Water/Sewer Billing	610-965-9231
Zoning	610-967-1322
Ambulance Corps	610-967-5615
Fire Department	610-967-5630
Fire Inspector	610-965-0719
Police Non-Emergency	610-965-3113
Emergency	911

Find us on 

Other Important Phone Numbers

PA One Call	1-800-242-1776
Sanctuary at Haafsville	484-788-8062
Street Lights – Repair and Maintenance, PPL	1-800-342-5775
Trash/Recycling Whitetail Disposal emmaus@whitetaildisposal.com	610-754-0103

Holiday Greetings continued

pot luck dinner at 5:30 p.m., held at St. John's Lutheran Church Parish Hall, 5th & Chestnut Streets. Then, on Saturday, December 14th, Santa and Mrs. Claus will take time out of their busy schedule with a visit to the Historical Society from 11:00 a.m. to 2:00 p.m. Please visit the museum and receive your orange and candy while supplies last.

On February 1st, 2020, the Emmaus Arts Commission will host its 14th SnowBlast Winter Arts Festival at Emmaus Triangle Park from 12:00 p.m. to 5:00 p.m. Activities will take place at Triangle Park and various venues throughout town including stores and restaurants.

With all of these wonderful events, where we encourage you to spend quality time with your family, friends, and neighbors, who has time to think about the winter weather that sometimes wreak havoc on our streets, sidewalks, and life? We know that sooner or later, that blustery winter weather is coming. When it does arrive, we urge you to be careful. Our Public Works Department will be removing snow and ice from the streets throughout the winter. Please remember, their job is to remove that snow and ice. Please don't throw it back out in the street, as you are only making it dangerous for others. Please know that they try to plow curb to curb, which means that you may get plowed in again if you shovel your walk before the streets are plowed. We ask that you be respectful and understand that they are only doing their jobs. In addition, our emergency service providers respond to countless calls from people falling on the ice, accidents, heart and breathing problems, and other emergencies related to snow and ice. Please be careful and know your limitations. If you have a neighbor that is elderly, handicapped, or has limitations, we encourage you to reach out and try to help them as well, as we all live in this wonderful community together.

We truly wish you a very happy and healthy holiday season and a short, warm winter without too much snow and ice!



**ORDER FOOD
ONLINE**

www.Buckeyetavern.com

**Now get
takeout
with uber
eats!**



610-966-4411 • 3741 Brookside Road, Macungie, PA 18062

Dr. Michael and Linda Waddell - 2018 Emmaus Volunteers of the Year



It is our honor to announce the recipients of the 2018 Volunteer of the Year award, Dr. Michael Waddell and his wife Mrs. Linda Waddell. They have been staples of our community for many years, serving in a multitude of different capacities in our community.

Dr. Waddell, who previously served on Emmaus Borough Council, is a current Board Member of the Knauss Homestead Preservation Society and is a founding member and President of the Emmaus Remembrance Garden. He previously volunteered on the Emmaus Arts Commission for many years and has served our community on the Emmaus Rotary Club as well as the Emmaus Main Street Partners. Mrs. Waddell has served in an equally impressive capacity as a volunteer in our community, having served on the Arts Commission as well as the Emmaus Remembrance Garden, just to name a few. The Waddell's, through their 15-year dedication and vision with the rest of the Emmaus Remembrance Garden team, have transformed what was essentially a side yard into one of the most beautiful and captivating areas in our community, where our citizens can go and enjoy some peace, quiet, and reflection time in a space that is inviting and welcoming.

Our entire community is grateful for the dedication and commitment that Mike and Linda have made to make Emmaus a better place to live. This is a well-deserved honor. Please join us in thanking the Waddell's for all that they do for our community!

HAPPY
Holidays

Borough Hall Holiday Schedule

Borough Offices will be closed in observance of the following holidays:

Thursday, November 28, 2019

Thanksgiving Day

Friday, November 29, 2019

Day After Thanksgiving

Wednesday, December 25, 2019

Christmas Day

Wednesday, January 1, 2020

New Year's Day

Monday, February 17, 2020

Presidents' Day

Please note that the Borough Council Meeting that would normally be scheduled for Monday, February 17, 2020, will be held on Tuesday, February 18, 2020, due to the Presidents' Day Holiday.

The Borough of Emmaus employees wish everyone a very safe and Happy Holiday Season! We look forward to serving you in 2020.



Better Coverage
On Your Most
Prized Possessions

E.F. Butz Agency

HOME | LIFE | AUTO | COMMERCIAL

3333 W Emmaus Avenue | Emmaus
610 965-2824 | efbutzins.com | JYelovich@efbutzins.com

Emmaus Creative Arts & Innovation Center Being Established in Emmaus

A diverse team of friends and neighbors passionate about arts and innovation has come together and crafted a dynamic vision to make magic and creativity happen in Emmaus. In early 2019, the group incorporated a PA charitable organization and in August received 501(c)3 non-profit status from the IRS for their project, known as the Emmaus Creative Arts & Innovation Center (ECAIC). With the vision of stimulating and encouraging a thriving creative economy and inclusive community that fosters collaboration, creativity and entrepreneurship, the center will provide cross generational, traditional, and emerging arts education, support the business aspect of the arts, and offer hands on experiences to community members. Maker, instruction, and studio space, as well as other resources will be available to artists, inventors, and innovators.

An experienced executive team has been assembled to form, establish, and operate the ECAIC. Led by James R. Baker, a local investment advisor, the team also includes local attorney and another community activist, Audrey Gardner Racines; CPA, Chris Basile; John Oetting, an inventor Makerspace and Innovation Advisor; Jo-Ann Pendleton, an interior designer and vocalist; and experienced non-profit executive Jule Thomases. Joyce Marin of Marin Consulting has been providing the board professional services in non-profit strategic management.

The ECAIC executive team has assembled over 40 interested stakeholders and kicked off Phase I of this project. They are partnering with Phoebe Ministries, who has made available the use of the 35,000 square foot vacant warehouse building on South 10th Street in the Borough, located directly across from Phoebe's new senior living community, Chestnut Ridge at Rodale. Located in an attractive, natural setting adjacent to Furnace Dam park, the warehouse property is within walking distance to dense residential neighborhoods and Emmaus High School.

Scott Stevenson, CEO of Phoebe Ministries shared, "We are thrilled to be a partner of ECAIC. The Borough of Emmaus has embraced Phoebe and our new community, Chestnut Ridge at Rodale, just as we are eager to embrace the vision of the Creative Arts and Innovation Center. The programmatic aspects at the Center will allow for our future residents to be engaged in new and exciting ways, both within their own community and the greater community." "We could not possibly think of a better use for the warehouse on the beautiful campus," said Lisa Fichera, chief operating officer for Phoebe, who added it will greatly benefit both the residents of Chestnut Ridge and other Emmaus citizens. "Bringing and enhancing intergenerational activities in a wonderful community like Emmaus is a dream for us."

When asked to reflect upon the creation of the ECAIC, James R. Baker, President of the board of directors, says, "From the beginning, I've been amazed at the immediate enthusiasm and support from the greater Emmaus community for the idea of an Arts & Innovation center. Everyone I've talked to in meetings and one-on-one has not only liked the vision but has offered their own ideas to make it even better, and I've listened. I've wanted this to be a community collaboration and I got my wish! For me the most important aspect of this project is the goal of inclusion. Everyone is going to be welcomed to the Center and have opportunities to experience the creative arts."

Audrey Racines, Vice President of the ECAIC, says, "Emmaus is a great place to live. Although I've always known that, for many years I thought Emmaus lacked two things to make it perfect: 1.) a high-end senior living community, and 2.) a multifaceted arts center. I was so happy to learn last year that Phoebe was taking care of the first of my wishes. Now, I am doubly grateful and very excited that Phoebe is helping to make possible the Emmaus Creative Arts & Innovation Center."

The ECAIC envisions resources to the community including space for arts instruction and pop up artist gallery space, rehearsal, instruction and collaboration space for performing artists such as musicians and dancers, a black box theatre, a culinary arts / local farm connection including a shared use commercial kitchen, and Maker spaces for the creation of soft, hard, and digitally fabricated items. ECAIC will address the needs of all ages in providing cross-generational opportunities during the after school, weekend, and summer time frames.

An important aspect of the Center will be the programming. Films, lectures, discussions, and performances will be scheduled in alignment with changing themes, creating dynamic synergistic opportunities. Additionally, the project will function as a



collaborative space for entrepreneurs, existing businesses, and other mission-aligned non-profits. The multi-faceted environment provided by the center hopes to encourage interactions and collaborations between and across program areas resulting in an explosion of art and creativity. The breadth and depth of programs housed under one roof is unique both within the Lehigh Valley and the Northeast region of the nation.

The committee has launched its capital campaign to renovate the building and is in the process of designating use of the space. The board is planning public engagement where citizens can weigh in on the project to ensure that the project meets the needs of the community. As the board and stakeholders are in the process of securing funding, they are also exploring partnerships with other organizations, individuals, businesses, and government entities. Individuals interested in more information on volunteering, donating or serving on a committee can go to the ECAIC website at emmauscreates.org.

The East Penn School District Administration states, "The East Penn School District is proud to support and collaborate with the Emmaus Creative Arts & Innovation Center (ECAIC). It is our hope that our students can bring their passions and ideas in collaboration with the greater community in Emmaus. These meaningful authentic experiences are priceless for our students. The ECAIC provides us with the means and the opportunity."

Borough Manager Shane Pepe stated, "The Borough of Emmaus is very supportive of this project. It's a great reuse of an under-used building. We see tremendous potential for this project to support arts and innovation in Emmaus, as we are a community rich in culture and we are proud to be part of this next step in the future of our community."

Ara Balieb, Producer & Director of Crowded Kitchen Players, stated, "The Lehigh Valley will greatly benefit when its independent performing artists have more accessible, professional, and affordable rehearsal-and-presentation space than is currently available... the Emmaus Creative Arts and Innovation Center will also serve to fill somewhat of a (theater) void that exists today in the fast growing western and southwestern municipalities of the Lehigh Valley. The specific missions of these independent artists are often those of creating and presenting new works on a variety of culturally and socially significant issues of our time."

Lin Erickson, the Executive Director & CEO of Da Vinci Science Center also sees the great potential, stating, "The Da Vinci Science Center supports the efforts of the ECAIC and looks forward to exploring opportunities to collaborate STEAM Education programming as the project moves forward."

The Borough would like to congratulate the entire ECAIC organization, as we wish them the very best as they endeavor through this very exciting project!



On behalf of the Board and vendors, we thank the entire Emmaus community and Borough of Emmaus for its support this past season in regards to our move to Triangle Park. We saw many familiar faces as well as many new faces and appreciate your business. A huge thank you to all the local businesses and residents for bearing with us as we work together with the Borough and Police with parking and the safety of everyone attending the market and any parking concerns. We are so thankful to be a part of this community! We are looking forward to a great winter season at the Triangle as well.



Please note our winter hours as follows:

December: Every Sunday, 10 a.m. - Noon

January - April: 2nd & 4th Sundays, 10 a.m. - Noon

During the Winter Market hours from January through April, the vendor line up will be less and Fourth Street will be open. The regular season will start on the first Sunday in May. Once again, thank you for the support and we hope to see you all winter long!

East Penn Neighbors Helping Neighbors

Shortly before the start of the new school year, **East Penn Neighbors Helping Neighbors** welcomed a new family into our program.

EPNHN serves families with children living in the East Penn School District who are homeless or home insecure through multi-faceted short-term assistance in order to help restore and sustain healthy, independent living.

After an initial assessment to identify the needs of a family, a family is welcomed into a temporary transitional housing and EPNHN Volunteers, with the skills to help meet the family's needs, work as part of a support team assigned to the family. EPNHN partners with the East Penn School District, the Borough of Emmaus, local churches, businesses, service organizations, residents, and volunteers to support one family at a time. EPNHN is looking forward to expanding partnerships with all the Boroughs, Townships, Businesses and Community organizations that service the East Penn School District.

Volunteers for EPNHN are needed to provide basic services that might include the transportation of family members, providing one-time/infrequent child-care, moving furniture to and from the EPNHN apartment/housing spaces, assisting with grocery shopping and meal planning, or assisting with searching for affordable housing as they leave the program. Volunteers are also needed to provide professional services pro-bono or at a reduced rate, including, but not limited to, career counseling, budgeting and financial planning, parenting and/or marriage skill development, and GED tutoring. Monetary donations are also accepted through our website.

If you have questions about EPNHN or the desire to volunteer, please contact us through our Facebook page or visit us at www.epnhn.org.



Crossing Guards Needed

The Emmaus Police Department and the East Penn School District are seeking additional volunteers to serve as Crossing Guards for the 2019-2020 school year. Can you spare a small fraction of your time? Are you interested in serving among the ranks of our existing staff of dedicated Crossing Guards? The Emmaus Police Department will provide you with the equipment and training necessary. Just a few hours a week and you will be rewarded with an invitation to a winter banquet and a summer picnic!!



Over the years, the Emmaus Crossing Guards have contributed to the safety of our children traveling to and from school each day. It is critical that we ensure their safety in the future. Will you help us? If you are interested, or you can help, please call the **Emmaus Police Department at 610-965-0722. Ask or leave a message for Cindy Pandl.** We will do the rest.

Zero PMI. 10% Down. 100% Local.

uncommonmortgage.com

EMBASSY BANK®
For the Lehigh Valley



Warm Holiday Wishes From Emmaus Main Street Partners



Farewell Fall! The weather will be turning soon but the Main Street Partners have taken advantage of the beautiful, lovely fall. In reflecting on the past season, we enjoyed a beautiful day for the Farewell to Summer Festival in late September! Our local businesses participated in the Scarecrow Trail to help connect community members and local businesses like Art BaYouMi Gallery, Vanity Studio, The Mix Bartending School, and more! It was also great to see the community come together for the Halloween Parade; a community favorite. Thank you to everyone who stopped by our booth at Emmaus Run Inn to partake in our spooky parade pre-game party for kids!

Small Business Saturday. Shop small and support local! On November 30, we encourage you to be part of the 10th annual holiday shopping tradition that brings together communities in support of their favorite small businesses. EMSP will be giving out goodie bags to those who pre-register for the goodie bags filled with freebies, chotchies, and more! Whether you get a goodie bag or not, please make an effort to shop local this holiday season and all year long!



Get in the holiday spirit with us. EMSP's Old Fashioned Christmas in Emmaus will be held on Saturday, December 7, 2019, from 11:00 a.m. - 7:00 p.m. Celebrate the season as we spend the day enjoying holiday fun throughout Emmaus, including live music, libations, a visit by Santa & Mrs. Claus and of course our annual tree lighting ceremony at Triangle Park. Fun for kids of all ages! Enjoy family friendly activities for children, teens and adults including:

- The Holiday Cheers Trail (21+only) & EMSP Beverage Bar
- Live musical groups & sing alongs!
- Craft vendors
- Emma the Mule name painting
- Candy Cane Lane walking tour with the Historical Sites for some kids' activities and crafts
- Hay rides with Belsnickel, our PA Dutch holiday friend!
- Children's tree decorating & lighting
- Photos with Santa by Wesley Works
- Official tree lighting

And more!

Small Business Roundtable

Looking Forward! If you haven't already, please make plans to join us on the third Thursday of each month at Triple Sun Spirits for our Small Business roundtable. In January, we will be hosting an EMSP Annual Meeting to review the previous year and run through a roadmap of what is to come. Typically, we look to bring in a professional that will share information beneficial to our local business owners. In the past we've been honored to have the Police Chief, Fire Chief, and more!

New Board Members

We would like to welcome Brittany Gray from BeYOU Marketing and Patrick McNealis of Patrick McNealis Insurance & Financial Group to our board.



Keep warm this winter but be sure to get out and play. Shop, dine and explore Emmaus!

Want to stay up to date with member news and events? Sign up to receive our monthly email by requesting so from AshleyL@LehighValleyChamber.org and follow us on Facebook at [Facebook.com/EmmausMSP](https://www.facebook.com/EmmausMSP).

2019-2020 Emmaus Main Street Partners Events!

NOVEMBER

21 - Small Business
Roundtable
30 - Small Business
Saturday

DECEMBER

7 - Old Fashioned
Christmas
19 - Small Business
Roundtable

JANUARY

16 - EMSP Annual Meetig
(Roundtable)
22 - Holidays are Over
Party!

FEBRUARY

2 - Souper Bowl Party
20- Small Business
Roundtable

MARCH

1-7 - East Penn Restaurant
Week
15 - Bingo with Emmaus
Historical Society
19 - Small Business
Roundtable

APRIL

16 - Small Business
Roundtable
22 - Earth Day Cleanup

MAY

10 - Mother's Day
Celebration
21-Small Business
Roundtable

JUNE

14 - Father's Day Grill &
Chill
15 - EMSP Golf Classic
18 - Small Business
Roundtable

JULY

16 - Small Business
Roundtable

AUGUST

20 - Small Business
Roundtable

STAY TUNED FOR A SUMMER
CONCERT SERIES ON THE TRIANGLE!

Like Us On
facebook 

• @EMMAUSMSP •

Emmaus Historical Society Events

218 Main St., Emmaus, PA 18049

610-966-6591 • www.emmaushistoric-pa.org • emmaushist@ptd.net

Open Saturdays, 10:00 a.m. to 4:00 p.m.

Open Sundays only during special events – always available by appointment. Free Admission

Monthly programs are held at St. John's Lutheran Church Parish Hall, 5th & Chestnut Streets at 7:00 p.m.



We are very excited about the events that will be happening at the Society and Museum this Winter! Enjoy the fun and magic of Christmas at the Emmaus Historical Society.

Save these special dates:

Friday, December 6 - Celebrate the Holidays.

Museum hours from 4:00 p.m. - 8:00 p.m. with wine and cheese, the debut of the 2019 Train Putz and vintage holiday decorations. Live music with the children's choir of St. Ann's School and the Emmaus Moravian Church Choir with Tom Baker, organist.

Saturday, December 7 - Old Fashioned Christmas Open House.

Children following the Candy Cane Lane are invited to make ornaments at the Museum from Noon - 4:00 p.m. for the Children's Tree on the Triangle. There will also be a walking tour to visit six Emmaus Historical sites from 1:00 p.m. - 3:30 p.m. beginning at the Emmaus Moravian Church. Please call the Museum at 610-966-6591 by December 5th to register. Join us during the Emmaus Main Street Partners sponsored Cheers Trail and Bonus Bites being held throughout town from Noon - 5:00 p.m. Museum hours from 10:00 a.m. to 8:00 p.m. with cider, punch and baked goods.

Wednesday, December 11 - Annual member Christmas party pot luck dinner at 5:30 p.m. The dinner will precede a special visit from the Belsnickel portrayed by Keith Brintzenhoff.

Please call the Museum if you plan to attend and tell us if you will bring an appetizer, side dish or dessert. Monthly programs are held at St. John's Lutheran Church Parish Hall, 5th & Chestnut Streets. Programs are FREE to the

public and members and non-members are welcome!

Saturday, December 14 - Visit Santa and Mrs. Claus at the Museum!

Join us from 11:00 a.m. to 2:00 p.m. and experience the old-fashioned tradition of receiving fruit and a candy box. Bring your children and grandchildren for this experience for the young and young at heart. Regular Museum hours from 10:00 a.m. to 4:00 p.m.



The Historical Society Museum Collections and Display Committees are thankful for donations to both the Archives and Artifacts collections. As the Museum transitions in upcoming seasons, there will be several new displays and exhibits, supporting the seasons, programs and "New Acquisitions" which will highlight these treasures. As always, we appreciate any donation related to, or from, Emmaus. Nothing is too big or too small. Drop off donations any Saturday during Museum hours. If you have questions, call the office at 610-966-6591.

Holiday Fundraisers - You can also support the Museum operations through the purchase of items from the Society's "Santa's Wishlist" and/or by sponsoring some of the Museum's holiday decorations in memory or honor of a loved one.

For more details on the programs or special events above, visit our web site at www.emmaushistoric-pa.org, call the Museum at 610-966-6591, or visit the Museum on Saturdays from 10:00 a.m. to 4:00 p.m.

Join the "Lunch Bunch"

The Lehigh County Aging and Adult Services cordially invites you to join the "Lunch Bunch" at the Ridge Manor Senior Center located at 333 Ridge Street in Emmaus. Please consider joining us where you can enjoy socializing with other seniors, eat a hot, nutritious meal and participate in fun activities. You can choose from (or come for all!): BINGO, the "Koffee Klatch Klub" (chat, reminisce & enjoy coffee and a piece of coffee cake), cooking, exercise, movies, games, guest speakers presenting topics concerning senior citizens, etc. Feel free to contact center manager, Rachel Cubellis, at 610-965-2171 for questions or to make a reservation. This program is open to the public.

We hope to see you soon!





The Emmaus Public Library - Imagine, Create, Participate!

11 E. Main St., Emmaus, PA 18049

610-965-9284 • www.emmauspl.org

Monday – Thursday, 10:00 a.m. to 9:00 p.m. • Saturday, 10:00 a.m. to 5:00 p.m.

Don't miss the Friends of the Emmaus Public Library's Annual Holiday Used Book Sale Friday, December 6th, from 6 – 8 p.m.!

The Library will be closed on November 28th and 30th, December 24th, 25th, 31st and January 1st for the holidays.

Adult Events:

For Special Events: Please RSVP to Lauri at 610-965-9284 x210, epcollection@cliu.org, or the front desk.

Interviewing. Monday, December 2nd at 7 p.m. Are you getting ready for that all-important job interview? Come learn about interviewing from Bill Miner, Employment Interview/Career Counselor with PA CareerLink.

Financial Crimes Against Seniors. Thursday, December 5th at 10:30 a.m. Detective Frank Najera of the Upper Saucon Township Police Department will be presenting.

Poetry Reading & Book Signing. Monday, December 16th at 7 p.m. Join us for a poetry reading and book signing by Robert Fillman, assistant professor of English at Kutztown University. Robert Fillman's chapbook *November Weather Spell* was published in September 2019. In 2018, he was a finalist for the Gerald Cable Book Award, the Keystone Chapbook Award, and the Ron Rash Award in Poetry.

MONTHLY EVENTS:

Please call, visit the Library website or visit Facebook for more details.

Coloring Club. Monthly on the 4th Monday at 7 p.m. Explore your creative side, reduce stress, and color! All supplies are provided.

Crafternoon. Thursday, December 19th at 1 p.m. Join us as we make aluminum can ornaments.

Creative Writing. Monthly on the 2nd Tuesday at 1 p.m. Pat Johnson will guide this new group.

Daytime Book Group. Monthly on the 1st Tuesday at 2 p.m. to discuss books. On December 3rd, the group will be discussing *The Rent Collector* by Cameron Wright.

Evening Book Group. Monthly, October-May on the 2nd Tuesday at 7 p.m. On December 10th, the group will discuss *Born a Crime* and on January 14th, *Washington Black*.

Pinterest Party. Monthly on the 2nd Monday at 7 p.m. On December 9th we will be making holiday wreaths. Explore your creative side at EPL! All ages. No RSVPs. Supplies will be provided to the first 30 people who show up.

Find your Ancestors. Monthly on the 3rd Monday from 5-7 p.m. On December 16th, get personal assistance uncovering your family tree! Please call 610-965-9284 or email epcollection@cliu.org to schedule your 30-minute appointment with Chris Appleby. Please bring any information that you have already gathered.

Art Schneck Optical Co.
Prescription Eyewear
Safety Eyewear
Non-Prescription Sunglasses
Frame Showroom ~ Lenses Made On Site
Personalized Service Since 1959
720 Harrison Street • Emmaus, PA 18049
artschneckoptical@hotmail.com
artschneckoptical.com
610-965-4066
800-556-4066
60th Anniversary 1959-2019

HENDRICKS & SONS
AUTO SALES, SERVICE & COLLISION
Quality Pre-owned Automobiles
All Major and Minor Repairs
Complete Auto Body Service
Foreign and Domestic
Complete Computer Diagnostics
Jasper Engines and Transmissions Installed
Wheel Alignments
PROFESSIONAL DETAILING NOW AVAILABLE!
202 Main St. • Emmaus
Hours: Mon - Fri: 7am-6pm
Sat: 8am-3pm
610-967-5507
www.hendricksandsonsauto.com
MasterCard VISA confidenceplus ASE DISCOVER JASPER ENGINES & TRANSMISSIONS PPG Automotive Refinish

Memoir Writing Group. Monthly on the 4th Tuesday at 1 p.m. Join author Jerry Waxler and others to write about your life.

Movie Night. Monthly on the last Tuesday at 6 p.m.

Movie Matinee. Monthly on the last Thursday at 1 p.m.

Teen Events:

Teen Anime Club. Meets (mostly) on Thursday nights monthly from 6:30 to 8:30 p.m. for 6th grade and up.

Teen Writers Group. Meets on Thursday nights monthly from 7 to 8:30 p.m. for 6th grade and up.



Kids & Families Events:

Morning Block Party. Monthly on the first Tuesday at 11 a.m. Morning Block Party is for preschoolers and toddlers where we will bring out the toys and play for an hour!

Afternoon Block Parties. Usually the 4th Tuesday of the month, except for the next one, which is December 17th (moved to avoid holiday complications), from 4:30 to 5:30 p.m. for school aged children.

Preschool Storytime. Tuesdays at 10:30 a.m. beginning on January 21st. Join us for seasonal stories and crafts!

Toddler Storytime. Wednesdays at 10:30 a.m. beginning on January 15th. Join us for seasonal stories, songs, movement, and crafts!

Author Visit. Monday, December 2nd at 11 a.m. Barbara J. Morgan, Lehigh County Humane Police Officer, will be sharing her book Gummy and the Ferret.

Fun Family Films. On the first Saturday of each month. On December 7th, the Library will show Benedict Cumberbatch's rendition of The Grinch.

Books and Barks. Read to the Lehigh Valley Therapy Dogs! Kids can practice their reading to these dogs, who love to listen! Monthly on the 4th Thursday from 6:45 to 8 p.m.

LLJR (Literary Lunch JR). A book discussion group for 4th and 5th graders meeting at Noon to eat lunch and discuss interesting titles. Registration required and the first 10 to sign up receive a free copy of the book to keep! Kids bring a bagged lunch, and the Library will provide drinks and desserts. December 7th, Bo At Iditarod Creek by Kirkpatrick Hill and February 1st, Beauty and the Beak: How Science and a 3D Printed Beak Rescued a Bald Eagle.

Anime for Kids. Monthly on the 3rd Saturday at 2 p.m. Showing old & new anime for kids, 1st through 5th grade, and discussing Asian culture.

Literary Lunch. A book discussion group for 6th, 7th, and 8th graders meeting at Noon to eat lunch and discuss books! Registration required. The first six to sign up receive a free copy of the book to keep! Teens bring a bagged lunch, and the Library will provide drinks and desserts. December 21st, Stealing the Game by Kareem Abdul-Jabbar and February 15th, Marcus Vega Doesn't Speak Spanish by P. Carteya.

National Novel Writing Month (NaNoWriMo). During the entire month of November, the library provides a table for people to work on their novels. Kids and teens can get involved with the Young Writers Project – setting goals and writing on their own!

Old Fashioned Christmas. December 7th all day! Crafts, stories, and a film. Please check the Library calendar for updates and timing of events!

Crafting for Holidays. December 21st at 10:30 a.m. - Open to all ages!

Comfy Cozy Drop-in Storytime. January 4th at 11 a.m. Wear your PJs to the Library and bring your favorite stuffy!

Snow Blast. February 1st. The Library will be busy with crafts, the Ice Princess, and all manner of winter fun!



Keep an eye out for even more events! Check out the EPL website and Facebook page!



What is elder abuse?

Elder abuse includes physical abuse, emotional abuse, sexual abuse, exploitation, neglect, and abandonment. Perpetrators include children, other family members, and spouses, as well as staff at nursing homes, assisted living, and other facilities.

- **Physical abuse** means inflicting physical pain or injury upon an older adult.
- **Sexual abuse** means touching, fondling, intercourse, or any other sexual activity with an older adult, when the older adult is unable to understand, unwilling to consent, threatened, or physically forced.
- **Emotional abuse** means verbal assaults, threats of abuse, harassment, or intimidation.
- **Confinement** means restraining or isolating an older adult, other than for medical reasons.
- **Passive neglect** is a caregiver's failure to provide an older adult with life's necessities, including, but not limited to, food, clothing, shelter, or medical care.
- **Willful deprivation** means denying an older adult medication, medical care, shelter, food, a therapeutic device, or other physical assistance, and exposing that person to the risk of physical, mental, or emotional harm—except when the older, competent adult has expressed a desire to go without such care.
- **Financial exploitation** means the misuse or withholding of an older adult's resources by another.

Learn more about the types of abuse from the National Center on Elder Abuse (NCEA).

How many older Americans are abused?

Approximately 1 in 10 Americans aged 60+ have experienced some form of elder abuse. Some estimates range as high as 5 million elders who are abused each year. One study estimated that only 1 in 14 cases of abuse are reported to authorities.

Who are the abusers of older adults?

Abusers are both women and men. In almost 60% of

elder abuse and neglect incidents, the perpetrator is a family member. Two thirds of perpetrators are adult children or spouses.

What makes an older adult vulnerable to abuse?

Social isolation and mental impairment (such as dementia or Alzheimer's disease) are two factors. Recent studies show that nearly half of those with dementia experienced abuse or neglect. Interpersonal violence also occurs at disproportionately higher rates among adults with disabilities.

What are the warning signs of elder abuse?

- **Physical abuse**, neglect, or mistreatment: Bruises, pressure marks, broken bones, abrasions, burns.
- **Emotional abuse**: Unexplained withdrawal from normal activities, a sudden change in alertness, or unusual depression; strained or tense relationships; frequent arguments between the caregiver and older adult.
- **Financial abuse**: Sudden changes in financial situations.
- **Neglect**: Bedsores, unattended medical needs, poor hygiene, unusual weight loss.
- **Verbal or emotional abuse**: Belittling, threats, or other uses of power and control by individuals.

What are the effects of elder abuse?

Elders who have been abused have a 300% higher risk of death when compared to those who have not been mistreated. While likely under-reported, estimates of elder financial abuse and fraud costs to older Americans range from \$2.9 billion to \$36.5 billion annually. Yet, financial exploitation is self-reported at rates higher than emotional, physical, and sexual abuse or neglect.

Are there criminal penalties for the abusers?

Most states have penalties for those who victimize older adults. Increasingly, across the country, law enforcement officers and prosecutors are trained

on elder abuse and ways to use criminal and civil laws to bring abusers to justice. Review elder justice laws, statistics and other state resources compiled by the NCEA.

How does a person make an elder abuse report?

If an older adult is in immediate, life-threatening danger, call 911. Anyone who suspects that an older adult is being mistreated should contact a local Adult Protective Services office, Long-Term Care Ombudsman, or police. NCEA describes various scenarios and ways to Get Help, and more information is available from the Eldercare Locator online or by calling 1-800-677-1116.

How can elder abuse be prevented?


Educating seniors, professionals, caregivers, and the public on abuse is critical to prevention. If you're an older adult, you can stay safe by:

- Taking care of your health.
- Seeking professional help for drug, alcohol, and depression concerns and urging family members to get help for these problems.
- Attending support groups for spouses and learning about domestic violence services.
- Planning for your own future. With a power of attorney or a living will, you can address health care decisions now to avoid confusion and family problems later. Seek independent advice from someone you trust before signing any documents.

- Staying active in the community and connected with friends and family. This will decrease social isolation, which has been connected to elder abuse.
- Posting and opening your own mail.
- Not giving personal information over the phone.
- Using direct deposit for all checks.
- Having your own phone.
- Reviewing your will periodically.

Knowing your rights. If you engage the services of a paid or family caregiver, you have the right to voice your preferences and concerns. If you live in a nursing home, call your Long-Term Care Ombudsman. The ombudsman is your advocate and has the power to intervene.






COLONIAL CREST

APARTMENTS

102 North 10th Street
Emmaus, Pennsylvania 18049
(p) 610.967.5134 • (f) 610.965.1156



www.altmanco.com



Dr. Dan Smith Dr. Brandon Wegner Dr. Ashley Borrelli

ALBURTIS ANIMAL HOSPITAL

**Full Service Medical & Surgical Care . . .
... with a Small Town Atmosphere!**

- For Over 20 Years - Affordable & Compassionate
- Complete Medical, Surgical, Dental Care
- Digital X-Rays, Ultrasound, Laboratory
- "Like" us on Facebook! 

106 N. Main St. Alburtis, PA 18011 610-967-7387
www.AlburtisVet.com



Newly Renovated Facility



518 Chestnut St.
EMMAUS
484-822-5350

The Knauss House

152 East Main St. (rear), Emmaus, PA 18049 • www.theknausshomestead.org



The end of another year is fast approaching and with that comes "Old Fashioned Christmas."

As we prepare to close out this year and settle in for our "long Winter's nap" we would be remiss if we didn't cover a few events of the last three months.

The Knauss Homestead, 1803 House and the Emmaus Moravian Church celebrated the first of our annual "Founders Day Celebrations". This year's event, beginning with a Proclamation from the Mayor of Emmaus, was held on July 27th. The event included a "Founders Day Dinner" on the grounds of the church with a splendid dinner prepared by "Licensed to Grill". The event was well attended with special attention paid to the two founders, Sebastian Knauss and Jacob Ehrenhardt as well as the original congregation. Please be sure to mark your calendars for July 25, 2020 for an expanded celebration.



It is said by historians that the Moravians celebrated Christmas in a greater way than any other religious faction in the early colonies. There is much written by historians of the history of Christmas and they all seem to have a slightly different historical interpretation. One thing they all agree upon is that the Moravians started Christmas preparation early. The children dressed as warmly as possible against the impending winter chill, would board a wagon to gather earthly materials for the church putz. Items such as moss, gnarled and decaying roots, stones and other plant materials would be collected. The scent of fermenting apples used to make hard apple cider, wine and brandy would mingle with the crisp autumn air to signal the approaching Holiday.

The Knauss Homestead invites you to its version of **"Old Fashioned Christmas"** to be held on Friday evening, December 6th, from 6 to 8:00 p.m. and Saturday, December 7th. On Friday, December 6th, there will be a candlelight celebration of an **"Early Moravian Christmas"**. We are excited to announce that **Sarajane Williams** will be playing the harp for your listening enjoyment with wine and cheese. Sarajane was taught by Dorothy Knauss, a descendant of the Knauss family from the Homestead.



On Saturday, December 7th, the Knauss Homestead will be part of the **"Candy Lane Trail"**. Please bring your children to the Homestead from Noon to 4:00 p.m. to make a Christmas Tree decoration to place on the Children's Tree on the Triangle at 4:30 p.m.

Come and learn more about this celebration of the Christmas Holiday by the early settlers of the village of Emmaus. The Knauss Homestead is located in the back of the Cintas Parking lot located at 164 East Main Street. We look forward to seeing you.

**Bachman
Kulik & Reinsmith**
Funeral Homes, P.C.

"Family Owned & Operated-Serving All Faiths Since 1864"

John R. Kulik
Supervisor

Christina L. (Kulik) Schantzenbach
Supervisor

17th & Hamilton Sts. • Allentown

225 Elm Street • Emmaus

610-432-4128

610-965-2532

Green and Eco-Friendly Funerals Available



Remember the Emmaus Commemorative Garden During the Holidays

The holiday season is just around the corner. Looking for a creative Christmas, holiday or special gift? How about an Emmaus Remembrance Garden brick?

If you are looking for a creative gift for a special someone, the Emmaus Remembrance Garden is selling commemorative bricks to be placed at the lovely Remembrance Garden at the Knauss Homestead. There are many options to choose from including: wedding, anniversary, birthday, retirement, Eagle Scout, veteran's service, and community heroes. The possibilities are endless for brick-giving!

We invite everyone to visit the Garden to see the changes throughout the seasons. The perennial garden, pergola and benches, make for a quiet and beautiful setting to sit and enjoy each season. By purchasing a brick, your gift not only commemorates the one you love or an event to celebrate, your donation is put to great use and is sown back into the Garden to make it even nicer for our community.

A special Remembrance Garden Brick Gift Certificate is available for bricks purchased as gifts and the ordered bricks will be delivered as soon as we have them from the engraver.



Visit the Garden and our website at www.emmausremembers.org, where bricks can be designed and purchased with a credit card. For more information about the Garden or presentations that can be done for local groups, contact Mike Waddell at 484-274-2089 or remgarden1@gmail.com.

There are over 700 engraved bricks in the Remembrance Garden including over 300 for veterans...make sure that you remember the special people and events in your life and purchase an engraved brick today!

Modern

Plumbing & Heating

Electrical | Drain Cleaning | HVAC

304 East Main St. • Macungie, PA
modernplumbingandheatingcompany.com

610-435-2081

PA 100909 Since 1973

County Pest Control LTD

Concern & Safety for Children, Pets & Our Environment
610-965-4399 www.countypestcontrol.net

Hanover Engineering

HanoverEng.com

Civil • Municipal • Structural • Environmental • Surveying
Offices: Bethlehem • Allentown • Poconos • Lancaster • Wellsboro

Envisioning and Engineering sustainable, cost-effective, and environmentally responsible projects since 1970

News from the Shelter House

Most Emmaus residents are familiar with the Emmaus Historical Society's museum and office located in the big white house at 218 Main Street; the 1803 House located on South Keystone Avenue, a short distance off of Minor Street; and the Knauss Homestead, located behind the Emmaus Memorial Garden, past the railroad underpass at East Main Street. Not as many people know about, or have ever visited the Shelter House, the oldest continually inhabited dwelling in Lehigh County!



Tucked away in the woodlands at the end of South 4th Street, about halfway up South Mountain, is the Shelter House, the oldest of the historic Emmaus homes. This log home can trace its existence back to 1734! No one knows exactly when it was built or who built it prior to that year. The logs used in its construction are over 300 years old and were timbered from the local woodlands. In 1741, the structure was enlarged with an addition on the west side and a second floor built over the original structure.

The original section was built with the logs laid directly on the dirt ground. There is no basement under this section. Over the years, the east end of the building began to sink as the logs began to decay. In 1991, a major restoration project was undertaken to stabilize the collapsing east end. Over the past 40 years, the original wood shingle roof has been replaced.

The Shelter House Society was formed in 1953 by several historically-minded Emmaus residents. They purchased the property at auction for the purpose of preserving the historic building. To ensure its historic importance to the community, the Society sold the property to the Borough of Emmaus. On August, 26, 2019, a 10-year lease was signed between the Shelter House and the Borough of Emmaus. The Society's resident

historian, Dean Bortz, maintains the property. Dean has been a dedicated curator/caretaker for the past 46 years. His knowledge of the history of the cabin is an incredible asset to the organization and to the Borough. I invite you to schedule a tour of the Shelter House by calling the Society's resident historian and curator, Dean Bortz, at 610-965-9258.

If you would be interested in becoming a Society member, please call the Shelter House at 610-965-9258. Please leave your name and mailing address and an application will be mailed to you. If you are interested in becoming a Board Member, please send your resume to The Shelter House Society, Attn: Ellen McPeake, PO Box 254, Emmaus, PA 18049.

Please visit the Shelter House during its Christmas Open House on Saturday, December 7, 2019 from 1:00-4:00 p.m., for a family-friendly gathering filled with holiday music and light refreshments!

Treat your family to one of the best kept secrets in Emmaus!

KLECKNER & SONS
The Leader
APPLIANCES & ELECTRONICS
FOUNDED IN 1945
"SERVICE IS OUR MOST IMPORTANT PRODUCT"

Stop In and Visit Our New Showroom!

Large Selection of QUALITY Home Appliances at LOW PRICES

No Interest Financing Available • Timely Professional Delivery & Installation

575 Chestnut St., Emmaus, PA • 610-965-9851 • klecknerandsons.com

Haffner & ASSOCIATES

Certified Public Accountants

Service, Value and Communication - Simply Separates Us from the Rest!

Accounting, Tax and Consulting Services

Phone: 610-966-5137
Fax: 610-966-0592

E-mail: shaffner@haffnercpa.com
128 E. Main Street
Macungie PA 18062

Winter Stormwater Tips

As winter approaches and rain turns to snow, it is still important to consider stormwater pollution. Pollutants such as soaps, fertilizers, automotive fluids, and pet waste can collect in the snow pack, accumulating until a thaw suddenly dumps them into the storm water system. Contaminants that end up in the storm drains are carried off, untreated, to streams and larger bodies of water that are used for drinking, swimming, or fishing.

Here are a few helpful habits to reduce the amount of harmful pollutants entering storm drains this winter season:

- **Winterizing vehicles.** Check that your car is not leaking oil or other fluids. It takes only a small amount of motor oil to pollute thousands of gallons of water. Also, dispose of drained fluids properly. Many service stations will collect used motor oil and recycle it. Please do not dump these items down the storm drains.
- **Washing vehicles.** On a warm winter day, you may be tempted to break out the hose and bucket to get some of the road grime off of your car. Take a moment to see where that runoff is going. Does it wash down the driveway and into the storm drain? If so, all that salt and dirt will enter a stream or pond. Using a car wash facility may cost a few dollars more, but the water will be treated before being released into the watershed.
- **De-icing driveways and sidewalks.** While it may be habit to stock up on salt for the winter, many people would not consider dumping a bucket of salt on their lawn in the summer. But the results are similar. Salt runs off of your sidewalk and onto the surrounding soil. Consider more environmentally-friendly de-icing products like Rain-Ex, Enviro-MLT, or Easy Melt found at most auto parts and home improvement stores.



2020 Census - Call to Action

Counting Everyone ONCE, Only ONCE, & In The Right Place!

Who is included in the Census? ALL RESIDENTS – INCLUDING CHILDREN UNDER 5 who reside in your household as of April 1, 2020.

All responses confidential & protected by federal law.

Postcard will be mailed to your home. Fill out the Census Questionnaire on-line in 10 minutes. Mail-in & phone options also provided in 12 languages.

Please respond in March/April 2020

Responses provide crucial funding for schools, infrastructure, youth & senior centers, and many other essential services.



DRIES Lumber-Bldg. Materials
3580 Brookside Road, P.O. Box 7, Macungie, PA 18062
610-966-5555 • FAX 610-966-5868
NAME YOUR DAY SALE & SAVE
15% OFF Everything* at Dries
Coupon expires 4-1-20
Hardware, Plumbing, Electrical, Lawn & Garden & Building Materials. • 5% OFF Lumber, Drywall, Plywood, Power Tools, Generators & Water Softeners. Power tools include any item that is gas powered, plug-in or battery operated. Not valid on Special Orders, Grills, Awnings, Installation, Sale & Already Reduced Prices.
Not valid on any other coupon, discount or prior sale. Limit 1 coupon per customer. E
Good for entire purchase. Cash, Check or Credit Card sales only. No Rain Checks. All items cash & carry.
Maximum Discount \$150. **COUPON MUST BE PRESENTED TO RECEIVE DISCOUNT.**

**Schantz**
FUNERAL HOME, P.C.
Dustin M. Grim, Supervisor
CARING IS THE DIFFERENCE.
H. Walker Schantz, III, FD
250 Main Street
Emmaus, PA 18049
610-965-2421
fax. 610-967-4346
schantzfh@hotmail.com
www.schantzfh.com



**Borough of Emmaus Fire Department and Ambulance Corps
is starting a BSA Explorer Post**

EMMAUS EMERGENCY SERVICES EXPLORER POST 763

**We are seeking youth, ages 15-23, that are interested in learning about
the Emergency Services (Fire & EMS)**

If interested contact:

**Fire Chief John Price at Firechief@borough.emmaus.pa.us or
Lt. Craig Deppe at cdeppe@borough.emmaus.pa.us
or call 610-967-5630**

**OUR SELECTION IS
OFF THE
RAILS.**

American Fence & Flag
Since 1983

• FENCES • PORCHES • RAILINGS • DECKING • FLAGS & FLAGPOLES •

610.437.1944 | 2738 EBERHART RD. | WHITEHALL | AMERICAN-FENCE.COM

BEAR CREEK DENTAL, PC
BRENDAN BLYMIRE, DMD
Family and Cosmetic Dentistry
109 North Main St., Alburtis, PA 18011

- Exam & Cleanings
- Emergencies/Pain
- Low Dose Digital X-Rays
- Jaw Joint Relief
- Free Consultation
- Tooth Color Restoration
- Children of All Ages
- Crown & Bridge Work
- Implant Restoration
- Gum Therapy/Bleeding
- Root Canal Therapy
- No Mercury

www.bearcreekdentalpc.com
610-967-1500

SENIORS DISCOUNT

Join us in Welcoming Ryan Wessner – Assistant Code Official

Welcome, Ryan!

We are extremely excited to welcome Ryan Wessner to the Borough of Emmaus as the new Assistant Code Official. In his role, Ryan Wessner will serve as an Assistant to Borough Code Official, Jim Farnsworth.

Ryan joins the Emmaus team as a recent Building Official for Rice County, Minnesota, after 3 years of service. Born and raised in the Lehigh Valley, Ryan went to the University of South Dakota, where he played Ice Hockey and studied Public Health and Health Sciences. In 2016, he achieved a Bachelor's of Science Degree. Ryan enjoyed helping out in the community of Minnesota by coaching various youth hockey programs and was recently a coach for the Shakopee Minnesota Sabres.



Ryan and his wife, Courtney, are excited to move back to the Lehigh Valley, be a part of a great community, and be able to give back to the community where he was born and raised.

Please join us in welcoming Ryan Wessner to the Borough of Emmaus team. We are extremely excited to have his leadership and knowledge in the Borough of Emmaus!

New Tripoli Bank

Because people are more valuable than money.

FDIC LENDER

Toll-Free: 888-298-8821
www.newtripolibank.net

RESIDENTIAL • COMMERCIAL • INDUSTRIAL

BURKHOLDER'S
Heating & Air Conditioning, Inc.

Award-winning Service Since 1960

HVAC Install & Service
Financing Available
Generators Install & Service
Free Residential Estimates
24-hour Emergency Service

Geothermal HVAC
Building Automation Systems
Indoor Air Quality
Maintenance Plans
Sheet Metal Fabrication

610-965-5188
www.burkholders-hvac.com

Readers' **CHOICE** 2019
THE MORNING CALL

Best of the Valley 2019

383 Minor Street, Emmaus, PA

BURKHOLDER'S
We'll Be Right There!

610-965-9736
www.burkholders-hvac.com

Permits are Required



Do you need a building or zoning permit? Applications are available online! Download applications for permits right off of our website at: www.borough.emmaus.pa.us.

On the website home page, under the About Emmaus, click on "Documents/Forms" and choose which application you need. Simply fill it out and bring the completed application into Borough Hall at 28 S. 4th Street, so we can begin processing your permit. If you have any questions about permits, please call the Code Enforcement Officer at 610-967-1322.

Some examples of permits that the Borough of Emmaus require are: roof repairs, building repairs or remodels (causing structural changes), footers, foundation, framing, plumbing, electrical, signs, fences, sheds, dumpsters, demolition, driveways, pools, and zoning.



Moving Permits

A moving permit is required for any individual or family moving in, out, or within the Borough. The permit application can be obtained from the Cashier at Town Hall, 28 S. 4th Street, or by visiting the Borough website at: www.borough.emmaus.pa.us. The permit and the \$1.00 fee are filed with the Cashier at Town Hall. If you have any questions, please call Jessica at 610-965-0702.

FAST, FREE
quote in person.
A master's touch at a sweet price.

Master LIC#208
Reg #PA024396

VISA M.C. DISCOVER

610-351-9889

**ROBINSON
PLUMBING**

Feel good about your plumber

**WHY WORK
WITH US?**

- Be Your Own Boss
- Enjoy Outside Sales Independence
- Proven Products
- Flexible Schedule
- Generous Commissions

CBN
Community Builders Network

**NOW
HIRING!!!**

*Rewarding Work That
Fits Your Life!*

Call for Information 215-257-1500 x106
Email your resume to gregory.cbn@gmail.com

ServiceMaster of Allentown
CLEANING EMMAUS SINCE 1967!

Mention this ad, save \$25!
*Use code EMMAUS Job minimums apply, not valid with any other offer.

Residential ▶ Disaster Restoration
Commercial ▶ Janitorial

610.965.6058

933 Chestnut St | Emmaus

ServiceMASTER
Clean

**A Jon Roberts
works**

PAUL MITCHELL
FOCUS SALON

610-965-5055
332 State Avenue • Emmaus, PA 18049
T-Th 10am-7pm • Fri 10am-5pm • Sat 9am-4pm
www.ajrealon.com

News from the Emmaus Shade Tree Commission



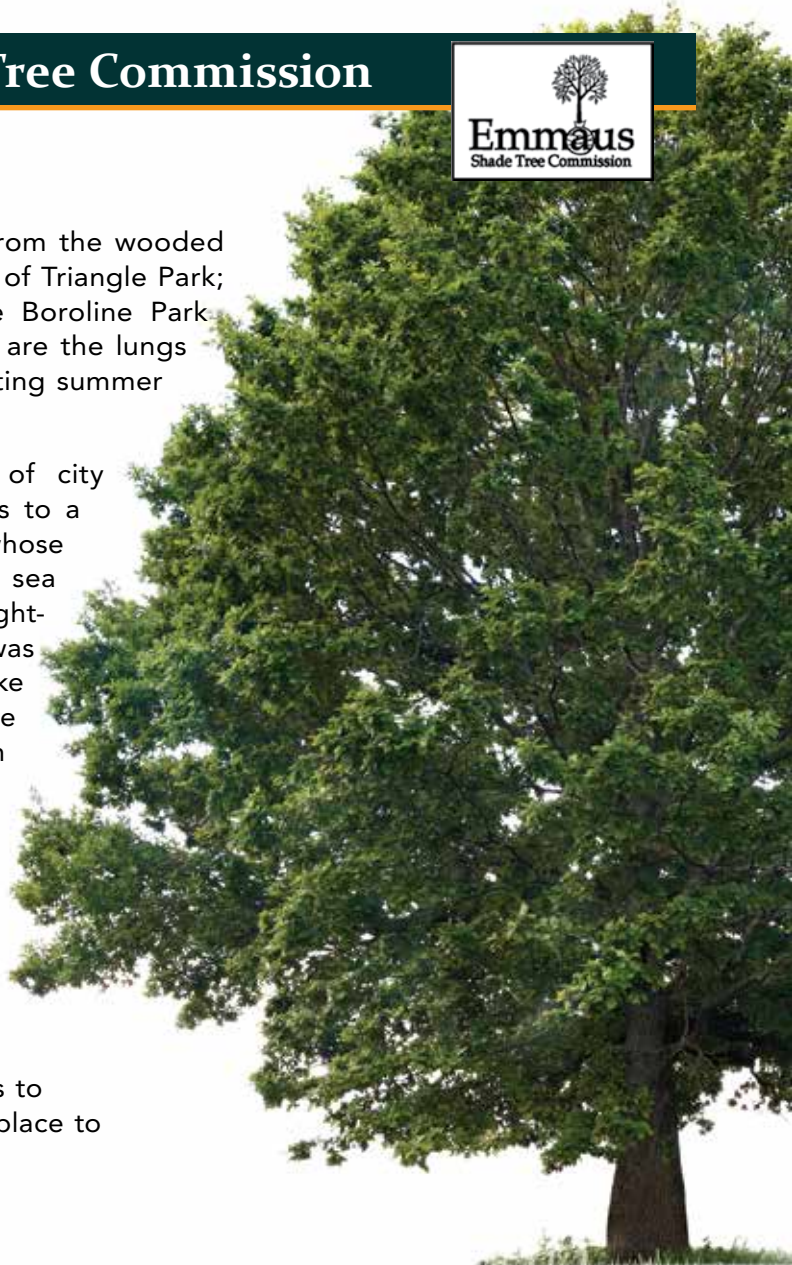
Trees to the Rescue

In many ways, trees improve our quality of life in Emmaus.

Emmaus is blessed with green and shady retreats, from the wooded isolation of the Shelter House to the downtown bustle of Triangle Park; from Community Park's tree-shaded pavilions to the Boroline Park trailhead, the jumping-off point for forest hikes. Trees are the lungs of our community, filtering out pollutants and moderating summer heat waves.

Our leafy surroundings are a contrast to those of city neighborhoods, where the relative rarity of trees leads to a greater appreciation of their benefits. In New York City, whose coastal location makes it especially vulnerable to rising sea levels, the Parks Department recently completed an eight-year effort to plant one million trees. The purpose was twofold: to help combat climate change and to make city life more pleasant. Indeed, New York's trees remove 51,000 tons of carbon and 1,100 tons of pollutants from the air every year.

Emmaus can't compete on that scale, but we could certainly benefit from more trees. Every tree planted in the Borough adds to the overall good by cleaning the air, reducing storm runoff, conserving energy, and storing carbon that would otherwise contribute to climate change. Trees are good for the soil and for wildlife. They increase property values. Our downtown street trees create an inviting streetscape that encourages shoppers to linger. Best of all, trees help make Emmaus a beautiful place to live and work.



Call Before You Cut

Before planting, pruning, or removing any tree within the public right-of-way (within 12 feet of the curb), Emmaus property owners must request a permit from the Shade Tree Commission. For questions about street trees or the Emmaus Shade Tree Ordinance, please contact any Shade Tree Commission member: Reds Bailey, 610-967-6191; Doug Hall, 610-967-2304; Beverly Springer, 610-965-6671; Rebecca Straus, 610-741-7193; and Linda Destan, 610-704-6756.

A Special Thank You to Our Business Sponsors

This publication is produced at no cost to the Borough of Emmaus residents thanks to the generous sponsorship of the businesses listed throughout the newsletter. The Borough recognizes these businesses as community supporters, and encourages residents to also support these local businesses with your patronage.



DKD Direct Kitchen Distributors
For the kitchen you'll love to come home to.

Strauss Family Owned
Since 1982
610-262-7235
Fax: 610-261-2446
www.directkitchen.com

NKBA National Kitchen & Bath Association

5585 MacArthur Road
Whitehall, PA 18052
PA HIC #004209



David Strauss
Steven Strauss, AKBD
Apts. Recommended

Emmaus Police Department

No Shave November



The Emmaus Police Department will be participating in "No Shave November." Officers will be required to pay \$50.00, in the form of a Target Gift Card, for the right to violate the grooming policy and not shave for the month of November. At the end of No Shave November, the gift cards will be used to buy Christmas presents for those less fortunate.

The Emmaus Police Department is also taking donations. Anyone wanting to donate a Target Gift Card can drop off their donation with the receptionist at the Police Department, Monday through Friday, 8:00 a.m. to 4:00 p.m. Any amount is greatly appreciated!

Real People, Real Lives, Changed by God.



LEHIGH VALLEY Baptist Church

BUILD BY CHURCH, AND THE GATES OF HELL SHALL NOT PREVAIL AGAINST IT.

Watch Sunday!
10:30 AM



4702 Colebrook Ave. Emmaus, PA 18049 (610) 965-4700
www.lvbaptist.org

Sunday School.....9:00 AM
Sunday Morning.....10:15 AM
Sunday Evening.....6:00 PM
Wednesday.....7:00 PM

Sewer Lateral Inspection Program

In January, 2019, Emmaus Borough Council adopted an Ordinance to require building sewer and lateral inspections any time a house is transferred or sold within the Borough. This was as a result of the PA DEP and EPA mandates requiring the community to eliminate the stormwater that is hitting the Allentown sewer plant. The Borough continues to invest millions of dollars into improving and removing stormwater from the main system, however, this is a key component of the infiltration and inflow that is hitting the system. The Ordinance took effect April, 2019.

Ordinance No. 1185 requires anyone that is selling or transferring their property to have their sewer lateral inspected via a camera. Any licensed plumber who has the capability to conduct camera inspections may be used, or the property owner can contract the Borough to conduct the inspection. An electronic copy of the camera inspection as well as a report with the findings must be submitted to the Zoning Officer at Town Hall. If the result of the inspection demonstrates that water is infiltrating the system through deficiencies such as cracks or breaks in the line, or via root intrusions or other systematic failures, the property owner must fix or replace the

building sewer or lateral prior to the sale of the property. The Borough monitors property transfers through data submitted by Lehigh County each month. If an individual fails to have the inspection completed, and the Borough receives the property transfer information, penalties are applied including fines.

The average inspection costs approximately \$225 - \$300. If there are serious issues with the sewer lines, it could cost much more, however, it is important to note that if there are issues with your lines, it means that pollutants are seeping into the ground and leaching into our potable water systems and / or rain water is hitting the sewer system, helping to cause overflows during heavy rains into the Lehigh River, meaning raw sewage is hitting the river as well. For these reasons, as well as due to the state and federal mandates, we need to ensure that the entire sewer system is working as it is designed and we are doing our part to eliminate these issues.

There are numerous provisions in the Ordinance that we encourage you to read. You can access Ordinance No. 1185 via webpage <https://ecode360.com/EM3676/laws/LF1069677.pdf>.

Call Before You Dig

If you are planning on digging, call Pennsylvania One Call System, Inc. (POCS) three business days before you dig at 1-800-242-1776 or 8-1-1. The call center is open 24 hours a day, 7 days a week, every day of the year. PA Act 287 as amended requires excavators as well as private landowners to call POCS three days prior to any type of digging occurring with powered equipment. Mark your excavation area in white paint before calling with a dig notification.

By calling, you allow the facility owners the opportunity to locate and mark their underground facility in advance of the planned excavation (gas and liquid pipelines will mark underground facilities using yellow stakes, flags, or paint).



**Know what's below.
Call before you dig.**



Making a house your home since 1991

(610) 965-7837

www.rlharrisconstruction.com

Emmaus, PA

Renovation • Remodeling • New Construction

Certified Green Builder • Fully Insured

See Us on Facebook

Pennsylvania Registered Contractor - (# PA 007915)

HARNED DURHAM
PROPANE • OIL • HVAC ENERGY

Family Owned & Operated
Serving The Lehigh Valley &
Surrounding Areas For Over 85 Years

- Fuel Delivery
- HVAC Installations & Repairs
- Maintenance Agreements
- 24-Hour Emergency Service

610-965-3424

4893 Buckeye Road • Emmaus
HarnedDurhamEnergy.com

\$25 OFF
Any HVAC Service

Not valid with other offers. Exp. 3/31/20

Financing Available!



PA 0002835

East Penn Upholstery

FREE ESTIMATES
Pick-Up & Delivery

Custom Upholstery
Residential - Commercial - Automobile

DAVID W. ERBE

E-mail: eastpennuphol@aol.com

Emmaus, PA 18049

PHONE/FAX: (610) 967-4658

**10%
Fabric
Discount
w/this ad**



See. Hear. Feel. Art! - Emmaus Arts Commission



Emmaus Arts Commission Hosts 14th Annual SnowBlast Winter Arts Festival

Each year, the Emmaus Arts Commission hosts a seasonal favorite of the Lehigh Valley. The annual SnowBlast Winter Arts Festival has become a winter tradition, creating a wonderful opportunity for the community to enjoy this beautiful time of year.

Now in its **14th year**, the SnowBlast Winter Arts Festival, hosted by the Emmaus Arts Commission, is being held on Saturday, February 1, 2020 from Noon to 5:00 p.m. Activities will take place at Triangle Park and various venues throughout town including stores and restaurants.

This event will feature local artist demonstrations throughout town, providing spectators an opportunity to view creativity first hand. Another favorite of the event, the SnowBlast **Community Art Project** provides an art-enriching experience for the entire community. The collaborative art project invites artists of all skills and ages to contribute their time and talent to design and create public art pieces. Emmaus Arts Commission will also host the **5th Annual Photo Contest** during the event. Live music and family activities will take place all day at Triangle Park. Many stores will be hosting live art demonstrations and special activities to warm folks coming in from the cold and local restaurants will provide "SnowBlast Chill Chaser" drinks and food specials. The SnowBlast Winter Arts Festival will be loaded with fun things to do for the whole family!

The SnowBlast Winter Arts Festival adds art related vitality to our Emmaus community and brings new and old friends to our downtown. Since 2005 the Emmaus Arts Commission has brought family-friendly events and artistic community pride to Emmaus and the Lehigh Valley. In 2019, EAC projects and events included; SnowBlast Winter Arts Festival, Annual Photography Contest, Gnome Sweet Gnome Art Auction, Paint-A-Hydrant, Chalk the Walk, and the Student Film Festival. These and other events are made possible through generous contributions and fundraising activities through the Emmaus Arts Commission and its sponsors and supporters. If you are interested in donating, please send to: Emmaus Arts Commission, 28th S. 4th Street, Emmaus PA 18049. We appreciate your support.

The SnowBlast Winter Arts Festival schedule of events will be posted at emmausarts.org. For more information on the Emmaus Arts Commission, visit www.emmausarts.org or visit our Facebook page at Emmaus Arts.



Dumpster Day — A Day to Throw Away



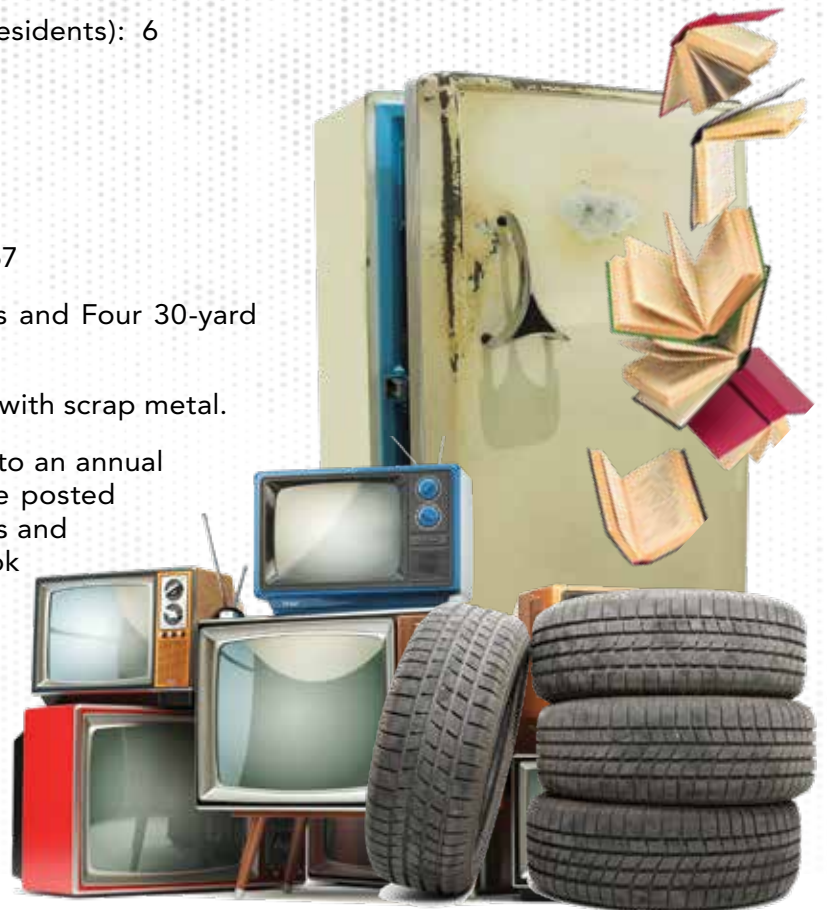
On Saturday, October 5th and Saturday, October 26th, the Borough of Emmaus hosted its first inaugural Dumpster Day events at the Emmaus Fire Training Grounds. On October 5th, the Dumpster Day event gave the Borough's residents the opportunity to part ways with items such as tires, electronics, car batteries, items with freon, and miscellaneous junk that has been storing up in the basement or garage for quite some time. On October 26th, the Borough residents were given the opportunity to dispose of Household Hazardous Waste items that are nearly impossible to dispose of. Popular items that were disposed of included different types of paint, oil, garden chemicals and pesticides.

For first-time events, both were a huge success! Both events were open from 8:00 a.m. – 1:00 p.m. Borough employees and volunteers partnered with employees from Whitetail Disposal as well as our official Household Hazardous Waste Disposal team to efficiently move vehicles through the process, as the teams assisted every individual that came through in disposing of their items, gave out educational information, and provided a much-needed service to our residents. The average wait-time per vehicle was approximately 5 minutes, with the longest wait lasting approximately 10 minutes. Inventory was taken for each vehicle, ID's were checked, and payments were taken for certain items while people were waiting in line to dispose of their items. The team held a debriefing meeting after the event to discuss ways to improve the event in future years.

As of the writing of this article, we do not have the official count on the October 26th event, however, the October 5th event saw the following:

- Official Count of Vehicles Dropping Off: 558
- Number of Vehicles Turned Away (non-residents): 6
- Tires: 300
- Vehicle Batteries: 48
- Freon Items: 104
- Number of Vehicles with Electronics: 357
- Other Junk: Two 60-yard packer trucks and Four 30-yard dumpsters filled with household waste
- Metal: One dumpster completely filled with scrap metal.

It is the Borough's goal to turn this event into an annual event for the community. Information will be posted in the Borough's Spring Newsletter with dates and times for next year. We truly hope you took advantage of this event, and if not, are able to take advantage of it in the future.



Garbage and Recycling

Garbage and Recycling Can Requirements:

As of April 15, 2020, every property in the Borough shall have containers / garbage cans for all recycling and garbage. Loose bags on the curb will no longer be allowed as of April 15th.

Dumpster Day and Hazardous Household Waste Collection:

Look for information in the Spring Newsletter regarding Dumpster Day and Hazardous Waste Collection, as well as other important information



Billing Changes:

First and foremost, your base bill will not change in 2020, however, based on your feedback, beginning in 2020, the Borough of Emmaus will offer new options for paying your Refuse Collection Assessment.

The Borough of Emmaus will now be billing your Refuse Collection Assessment on a **quarterly** rather than annual basis!!! Be on the lookout for your **BRAND NEW** 1st Quarter Refuse Collection Assessment bill to arrive in January. On your 1st Quarter Refuse Collection Assessment billing, you will have the option to pay for the **year in full, at a DISCOUNTED rate**, or pay the quarterly amount due and continue to receive quarterly bills throughout the year. Quarterly Refuse Collection Assessment payments will be due on February 18th, May 15th, August 17th and November 16th, 2020. Past due quarterly payments will result in a 10% penalty.

Low Income Reduced Refuse Rate

The 2020 guidelines for the Low Income Reduced Refuse Rate are:

- Head of the household must be 62 years of age or older.

AND

- Annual income for 2019 must not have exceeded \$18,000, as a single resident, or \$25,000 as a household of 2 or more. This includes individuals residing in the home under the age of 62.

2020 Low Income Reduced Refuse Rates:

- \$180.00 for the year if paid in FULL by February 18th, 2020.

OR

- \$50.00 per quarter if opting to pay on a quarterly basis.

Both of the above listed guidelines must be met to be considered for this reduced rate. Any resident that believes they qualify for Low Income Reduced Refuse Rate, must submit their completed application along with all documentation to the Borough Manager **no later than February 1st to be considered for this discounted rate**. Applications can be found on the Borough website www.borough.emmaus.pa.us or at Town Hall. Applications will not be mailed out. Please contact Refuse billing with any questions you may have concerning your 2020 Refuse Collection Assessment.



Holiday Schedule Refuse/Recycling 2020:

The following is a list of holidays observed by Whitetail Disposal and the routes they will affect.

- Wednesday, January 1, 2020 – New Year's Day – Red, Blue and Green routes affected
- Thursday, November 26, 2020 – Thanksgiving Day – Blue and Green routes affected
- Friday, December 25, 2020 – Christmas Day – Blue route affected

Reminder: **Red route** – normal pick up day is Wednesday. **Blue route** – normal pick up day is Thursday. **Green route** – normal pick up day is Friday.

In the event a holiday falls on or **before** your normally scheduled pick up day, your refuse and recycling will be collected the following day. * I.E. For the Thanksgiving holiday, homes with a pick up day of Thursday (Blue route), your refuse and recycling should be put out Thursday evening and will be collected on Friday am. For homes with a pick up day of Friday (Green route), your refuse and recycling should be put out Friday evening and will be collected Saturday am. Homes with a pick up day of Wednesday (Red route), will not be affected by the Thanksgiving holiday. Whitetail Disposal also operates on the same policy when there is a weather delay. In the case of a weather event, your pick up day will occur on the following day.

E-Waste Recycling

Whitetail Disposal will be providing a 30-yard container at **33 Klines Lane**, specifically for E-Waste collection. The collection for E-Waste Recycling will be similar to the schedule we previously had, as it will be a once per month event from March through November. The schedule will remain the same as before. The E-Waste Dumpster will be available at our Borough Garage at **33 Klines Lane** on the **2nd Monday of the month** from Noon to 6:00 p.m. Whitetail Disposal employees will be providing manpower to assist residents with disposal of these items. The rules have not changed with E-Waste collection, as residents will be required to show identification and will be limited to three items per month, or pay an additional fee of \$10 per item in addition to the allowed number. More details can be found on the Borough's website and in future newsletters regarding E-Waste Recycling.

The 2020 E-Waste Recycling dates are as follows:

- March 9th
- April 13th
- May 11th
- June 8th
- July 13th
- August 10th
- September 14th
- October 12th
- November 9th

Whitetail utilizes AERC out of Allentown for their Electronics Recycling disposal site.





Recycling Requirements:

The recycling world has been sent into a tailspin, as we have previously informed the community. China no longer accepts most recycling from the United States; therefore, the market is adjusting, costs are going up, profits are going down, and requirements are tightening. There are domestic recycling factories that are currently being built to try to adapt to this massive change, however, this is going to be a slow process. In the meantime, we are forced to deal with the changes. With that said, residents will be required to follow the rules regarding recycling.

**RESIDENTS MUST USE A CONTAINER FOR RECYCLABLES.
DO NOT PUT YOUR RECYCLABLES IN A BAG!**

In addition, if your recycling is contaminated, or includes items that are not acceptable, according to the list below, they will be **REJECTED**. You will receive a sticker from Whitetail detailing the reason why your recycling was rejected. Because of the new recycling requirements at a state, federal, and international level, this policy will be strictly followed.

Additional requirements are below:

Single Stream Recycling

- No sorting needed! Everything goes into one container, but please **don't bag your recyclables**.
- The following are **acceptable** recyclables:
 - o Paper, cardboard, newspaper and flat board
 - o Empty aerosol cans
 - o Junk mail, manila & brown folders, glossy & colored inserts
 - o Magazines & Telephone books
 - o Bi-metal
 - o Tin
 - o Steel containers and aluminum cans
 - o Glass bottles & Jars
 - o Plastics #1-6

If you have questions regarding your refuse and recycling, please don't hesitate to contact us!





Prestige


MARBLE & GRANITE INC.

RESIDENTIAL – COMMERCIAL
CUSTOM COUNTERTOPS
HARDSCAPE PRODUCTS – TILE

M, T, W, F 9-5 THURS. 9-7 SAT. 9-4

133 STATE AVE. 610-965-6900
EMMAUS, PA 18049 FAX: 610-967-0656

WWW.PRESTIGEMARBLEGRANITEINC.COM



DIMMICH & DINKELACKER, P.C.

ATTORNEYS AT LAW

Jeffrey R. Dimmich • Thomas H. Dinkelacker • Roxann R. Steelman

2987 Corporate Court, Suite 210 • Orefield, PA 18069
T: 610-398-1800 • F: 610-398-8304 • www.lvlawpractice.com

Curbside Leaf Collection



The Borough of Emmaus will continue its 2019 Curbside Leaf Collection through Friday, December 6th. The Borough is unable to set specific pick-up dates for leaf pick-up for individual streets throughout the town and recommends that leaves are raked out to the curb line the beginning of each week. The Public Works Department will collect twice a week, however, please be advised that if the Borough encounters winter weather and the Public Works Department needs to plow the streets, any leaves in the road will be plowed.

The Public Works Department will make every effort to get the roads cleaned up before the winter. For **FINAL COLLECTION**, the week of December 2nd through December 6th, please have your leaves out on Monday morning (December 2nd) of the final week. Once the Public Works Department has made its final pass on your street, they will not return.

- Please rake all leaves to the curb into long narrow rows not more than 18" into the road. Leaves placed on the sidewalk will not be collected. The Public Works Department will not empty bags or other containers; this is the responsibility of the resident. Branches, shrubbery, grass, garbage, dog waste, and other building materials will not be picked up.
- Leaves will not be collected on private property. If leaves are not in place when the crews go by, they will be picked up on the following round through the Borough. No "return trips" will be made to pick them up.
- Residents who have areas designated as "No Parking" (yellow painted curbs) are encouraged to pile leaves at these locations for easier pick up.
- Piles with anything other than leaves will not be picked up. These objects will cause damage to the leaf pickup units and put them out of service at a great expense of time and money to the Borough and its residents.
- Do not place tarps over your leaves. The Public Works Department will bypass them and they will not be collected.
- To help facilitate the picking up of the leaves, please keep all vehicles away from the area where the leaves are piled. The Public Works Department will not rake piles of leaves out from between parked cars or from under them.
- Do not pile leaves on or around storm drains as this will cause flooding issues and create unsafe driving conditions.

Thank you for your cooperation. For additional leaf/yard waste disposal, the Compost Site is also open for drop off through December 6th. (See above right)

Compost Site Hours of Operation

October 29 – December 7

Tuesday & Thursday – 7:30 a.m. to 2:00 p.m.

Wednesdays – 3:00 p.m. to dusk

Saturdays – 8:00 a.m. to 4:00 p.m.

January 13 – 17, 7:30 a.m. to 2:00 p.m. for disposal of Christmas trees and other yard waste.



Snow Plowing Tips and Reminders

The Public Works Department of the Borough of Emmaus is dedicated to the safety of its residents. At times, snow removal can be a monumental task and our Department of Public Works employees work around the clock to keep the State and Borough routes open. In an effort to prepare our residents for impending snow storms, the Public Works Department wants you to know more about snow removal and answer your most frequently asked questions.



1. When will my street be plowed? Depending on the severity of the snowstorm, roads that will be plowed first are: the roads with the highest traffic volume, steep hills, state roads, snow emergency routes, roads near emergency service facilities, and roads near public institutions. While the storm is occurring, one pass is made in each direction of every street. After this is complete, or it is determined that the storm is coming to an end, the pushing back phase of the excess snow will begin. This is when all streets are cleaned, curb-to-curb or to the shoulder of the road.

2. Should we move our cars from the street? When a storm is forecasted, move vehicles to off-street parking when possible and keep vehicles off the street until plowing is completed. Parked cars can cause both a hazard and hindrance to snow removal efforts. This allows plows to clear the entire roadway the first time through, making return trips unnecessary.

3. What about driveways and sidewalks? When cleaning your street, the crews have no place to push the snow except to the side of the road. This creates the unavoidable problem of already cleaned sidewalks and driveways to be covered with snow. Residents and business owners should wait until the Borough trucks and equipment have completed their work before cleaning driveways, sidewalks, and vehicles. Snow from vehicles and sidewalks should not be deposited back into that portion of the street where snow has already been removed. Do not shovel snow from your driveways into the roadway. This practice is illegal under the state motor vehicle code and Borough Ordinance 303 and is also hazardous. Fines for violations range from \$25.00 to \$100.00. Please do not shovel snow into the street! Residents are responsible for the actions of anyone they may hire for removal.

4. If the Borough pushes snow back onto my sidewalk, who is responsible? Sidewalks are the responsibility of the property owner. Borough Ordinance 302

requires that all sidewalks must be cleared of snow or ice accumulations within twenty-four (24) hours after each precipitation ends. Failure to do so may result in fines for violations of the Ordinance. School bus stops must also be kept clear of snow and ice on the sidewalks.

5. What if my mailbox becomes covered with snow? Your mailbox and the access to it, for the U.S. Postal Service, is the responsibility of the resident. Again, because the crews have no place to put the snow, roadside mailboxes may become blocked. Heavy snow may damage mailboxes. This is not intentional, but may occur. Please make sure your mailbox is sturdy and in good repair. The Borough will not be responsible for repairs to mailboxes placed within the legally defined rights-of-ways of its roads, unless they are actually struck by the snow removal equipment.

6. What should I do if my lawn or landscaping was damaged by the snowplow? Any objects that are placed within the right-of-way by the property owner, including trees, shrubs or lawns are not the responsibility of the Borough in the case of plow damage. If there are low hanging branches overhanging the roadway, the Borough's plows or emergency vehicles will not be able to make a clear pass through. Those areas may not be plowed and emergency vehicles may not have access. Please make sure that all overhanging branches are trimmed prior to winter.

Weather and snowstorms require patience and neighborhoods and businesses should work together. If practical, develop plans ahead of time in relation to where snow and ice will be stored. Contractors with plow equipment and residents with snow blowers should remain mindful of the direction snow and ice is removed from properties. Remember, we are all trying to achieve the same goal of keeping our roadways safe and traffic moving. During snow storms, SAFETY is the Borough's main concern.

PLEASE HAVE PATIENCE! Snow removal is tedious and a very time-consuming job. The Borough of Emmaus Public Works snow removal operators are human and work many hours under very difficult conditions to keep Borough residents safe. Please do not abuse them or threaten them or the Borough of Emmaus Police Department may be contacted. Travel should be limited during a snowfall and immediately after, unless absolutely necessary. Please do not call; unless it is urgent. When crews are removed from normal routes, it slows down the overall efforts. If a call warrants attention, the information will be dispatched and the crew will take care of the problem as soon as possible.

Adopt A Fire Hydrant

Do you live near a fire hydrant? If yes, would you like to consider adopting it this winter?

If you have a hydrant in your neighborhood, please adopt it this winter by keeping it clear of snow and ice so that it is readily accessible in an emergency.

Your assistance is greatly appreciated.



CHRISTMAS TREE COLLECTION

The Public Works Department will collect Christmas trees on **Friday, January 3rd, 2020** and **Friday, January 10th, 2020**. Please place your tree at the curb, **WITHOUT A BAG** and the Public Works Department will pick it up. Trees discarded after **January 10th, 2020** will not be picked up. After that, residents must take their tree to the Compost Site for disposal. The Compost Site will be open daily January 13th to 17th, 2020, from 7:30 a.m. to 2:00 p.m. for disposal of Christmas trees and other yard waste.

First Commonwealth
FEDERAL CREDIT UNION
BELONG. GROW. THRIVE.
Insured by NCUA. Equal Opportunity Lender.

PENNSYLVANIA'S
#1 CREDIT UNION
IS IN EMMAUS!

1080 Chestnut St. • Emmaus, PA 18049
www.firstcomcu.org • 610.821.2403

Forbes 2019
BEST-IN-STATE CREDIT UNIONS
Powered by STATISTA

We live here. We buy here. We sell here.™



RESIDENTIAL & COMMERCIAL

610.928.1000 | WESLEYWORKSREALESTATE.COM | 500 CHESTNUT STREET, EMMAUS





Borough of Emmaus
28 South 4th Street
Emmaus, Pennsylvania 18049

ECRWSS EDDM
Postal Customer

Presort Standard
U.S. Postage PAID
Lehigh Valley, PA
Permit No. 550



Winter
2019



This Community Newsletter is produced for the
BOROUGH OF EMMAUS by Hometown Press
(215) 257-1500 • All rights reserved®



To Place An Ad Call Mr. Kim Kriebel At Hometown Press • 267-371-2833

D.E. Cressman
INSURANCE AGENCY INC.

**Become a Member
of our
Growing Family**

Lowest Rates with a Personal Touch
Automobile – Homeowners Insurance
Commercial/Small Business Life Insurance Umbrella Insurance



2310 Walbert Ave., Allentown • 610-433-1568 • www.Choosecressman.com

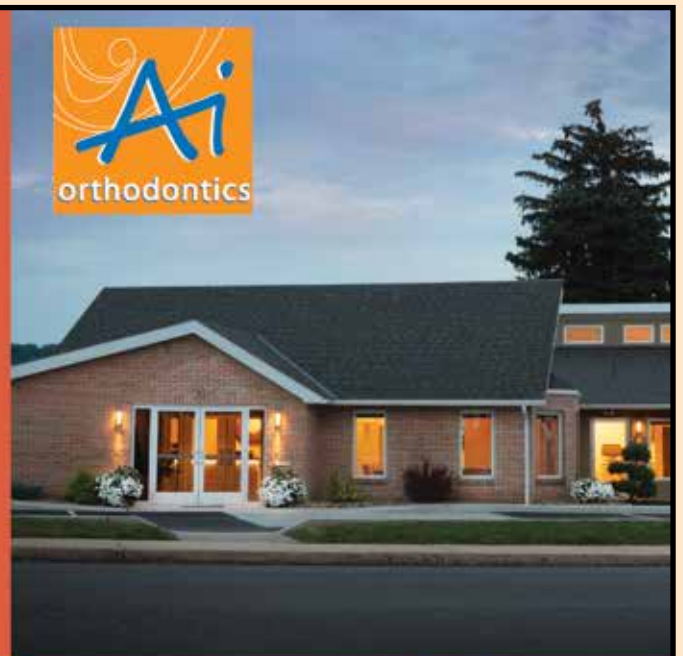
**Your Friendly
Neighborhood Orthodontist**

**Affordable payment plans
Invisalign, braces
for the entire family!**

"We have two kids that needed braces so we decided to use Dr. Issa and his team. We have had great success with his top notch work. The staff is very helpful when I've called with questions.... We are very proud to say that we chose Dr. Issa and his staff as our orthodontic office."

Lisa Lobst

Free Consultation Call Us Today!
610-965-6898



www.aiortho.com